

# ABUSE RESEARCH

For archive and to sign up for distribution list:

<http://abuseresearch.info/>

Questions: Harise Stein, MD [harise@stanford.edu](mailto:harise@stanford.edu)

## Child Abuse

Gershon NB, High PC.

**Epigenetics and child abuse: Modern-day Darwinism—The miraculous ability of the human genome to adapt, and then adapt again.**

Am J Med Genet C Semin Med Genet. 2015 Dec;169(4):353-60. PMID: [26502111](#)

“A growing body of literature implicates Adverse Childhood Experiences, including physical, sexual, and emotional abuse, in a broad range of negative health consequences including adult psychopathology, cardiovascular, and immune disease...This review outlines our developing insight into the interplay between our human biology and our changing environment, and explores the growing evidence base for how interventions may prevent and ameliorate damage inflicted by toxic stress in early life.”

Kivistö K, Alapulli H, Tupola S, Alaluusua S, Kivitie-Kallio S.

**Dental health of young children prenatally exposed to buprenorphine. A concern of child neglect?**

Eur Arch Paediatr Dent. 2014 Jun;15(3):197-202. PMID: [24132830](#)

51 children who as newborns tested positive for opioids, compared to a control group, were less likely to brush their teeth or have parents involved with tooth brushing, and were more likely to develop dental caries.

Sylvestre A, Bussièrès ÈL, Bouchard C.

**Language Problems Among Abused and Neglected Children: A Meta-Analytic Review.**

Child Maltreat. 2016 Feb;21(1):47-58. PMID: [26620719](#)

Compared to controls, Canadian children who had experienced abuse and/or neglect showed delayed language skills, regardless of the type of maltreatment. Authors note the importance of early detection and intervention for these children.

Tietjen GE.

**Childhood Maltreatment and Headache Disorders.**

Curr Pain Headache Rep. 2016 Apr;20(4):26. PMID: [26936357](#)

“Dysregulation of the HPA axis [stress system], autonomic, immune, and metabolic systems appears to be a consequence of maltreatment, and is also reported in migraine. Areas of the brain structurally and functionally affected by childhood abuse and by migraine are also similar...”

Johnson K, Bradshaw K.

**Skeletal Aspects of Non-Accidental Injury.**

Endocr Dev. 2015;28:247-58. PMID: [26138846](#)

Review of non-accidental skeletal injuries including the role of radiology, normal variants of growth, and underlying metabolic or genetic disorders.

Pereira EM.

**Clinical perspectives on osteogenesis imperfecta versus non-accidental injury.**

Am J Med Genet C Semin Med Genet. 2015 Dec;169(4):302-6. PMID: [26492946](#)

Review of clinical findings in osteogenesis imperfecta (genetic “brittle bone” disorder) and differentiation from non-accidental injury in children.

Pepin MG, Byers PH.

**What every clinical geneticist should know about testing for osteogenesis imperfecta in suspected child abuse cases.** Am

J Med Genet C Semin Med Genet. 2015 Dec;169(4):307-13. PMID: [26566591](#)

Review and genetic testing algorithm for forms of bone fragility as part of an evaluation for possible non-accidental injury in children.

Marion R.

**Genetic drift: A case of abuse.**

Am J Med Genet C Semin Med Genet. 2015 Dec;169(4):349-52. PMID: [26462608](#)

Essay illustrating the toll that a missed or delayed diagnosis of brittle bone disease can have on families, via a case where a child spend their entire first year of life in foster care due to a misdiagnosis of abuse.

# Adult Manifestations of Child Abuse

Felitti V

## Reflections on the Adverse Childhood Experiences (ACE) Study, 2016

Archived foundational video explaining the origins and findings of the ACE study  
<https://www.youtube.com/watch?v=-ns8ko9-ljU>  
 "What's clear to me is that the low hanging fruit here is that there is a huge portion of the population that has grown up without any experience with supportive parenting themselves."

Brennenstuhl S, Fuller-Thomson E.

## The Painful Legacy of Childhood Violence: Migraine Headaches Among Adult Survivors of Adverse Childhood Experiences.

Headache. 2015 Jul-Aug;55(7):973-83. PMID: [26104222](#)

From a large Canadian survey looking at 3 childhood adverse experiences (witnessing parental dv, childhood physical abuse or childhood sexual abuse) and controlling for multiple variables, for both men and women increasing number of ACEs increased risk of adult migraines.

**Table 3.—Gender-Specific Logistic Regression of Migraine Among Those With One or More Adverse Childhood Experiences vs Those With None†**

	Women (n = 12,638)	Men (n = 10,358)
Number of adverse childhood experiences‡		
None (ref)		
One	1.43 (1.25, 1.62)	1.36 (1.13, 1.65)
Two	2.32 (1.97, 2.73)	2.51 (1.94, 3.25)
Three	2.85 (2.25, 3.60)	3.26 (2.09, 5.07)

Shields ME, Hovdestad WE, Gilbert CP, Tonmyr LE.

## Childhood maltreatment as a risk factor for COPD: findings from a population-based survey of Canadian adults.

Int J Chron Obstruct Pulmon Dis. 2016 Oct 26;11:2641-2650. PMID: [27822027](#)

From a large Canadian survey, childhood maltreatment (CM) was established as a risk factor for chronic obstructive pulmonary (lung) disease. "Although a large part of the association is attributable to cigarette smoking, other factors such as the trauma associated with CM and

environmental factors may also play a role...smokers with a history of CM are less likely to quit smoking even after being diagnosed with a debilitating condition such as COPD."

Geoffroy MC, Pinto Pereira S, Li L, Power C.

## Child Neglect and Maltreatment and Childhood-to-Adulthood Cognition and Mental Health in a Prospective Birth Cohort.

J Am Acad Child Adolesc Psychiatry. 2016 Jan;55(1):33-40.e3. PMID: [26703907](#)

From a large long-term British study, "child neglect was associated with cognitive [thinking] deficits equivalent to a 15% lower cognitive ability at 16 years and long term into mid-adulthood (3.4% lower at 50 years), with a corresponding increased risk of poor educational qualifications. Conversely, sexual, physical, and psychological abuse and witnessing abuse were associated with poorer childhood-to-adulthood mental health, but not with cognition."

Yeung EW, Davis MC, Ciaramitaro MC.

## Cortisol Profile Mediates the Relation Between Childhood Neglect and Pain and Emotional Symptoms among Patients with Fibromyalgia.

Ann Behav Med. 2016 Feb;50(1):87-97. PMID: [26404060](#)

Of 179 adults with fibromyalgia, childhood neglect predicted a flattened cortisol profile (impaired appropriate release of stress hormones), which in turn predicted elevated daily pain and emotional symptoms.

Kamiya Y, Timonen V, Kenny RA.

## The impact of childhood sexual abuse on the mental and physical health, and healthcare utilization of older adults.

Int Psychogeriatr. 2016 Mar;28(3):415-22. PMID: [26477244](#)

From a large Irish aging study, 6% of respondents reported childhood sexual abuse, and this group was more likely to have depression, anxiety, worry, loneliness, low quality of life, poor self-reported health, lung disease, arthritis, peptic ulcer, chronic pain, high levels of total cholesterol and low-density lipoprotein, and more doctor and hospital visits.

Johnson SL, Cuellar AK, Gershon A.

## The Influence of Trauma, Life Events, and Social Relationships on Bipolar Depression.

Psychiatr Clin North Am. 2016 Mar;39(1):87-94. PMID: [26876320](#)

"This article reviews longitudinal research to suggest that trauma, negative life events, social support deficits, and family difficulties are common and predict a more severe course of depression when present among those diagnosed with bipolar disorder."

Misiak B, Moustafa AA, Kiejna A, Frydecka D.  
**Childhood traumatic events and types of auditory verbal hallucinations in first-episode schizophrenia patients.**  
Compr Psychiatry. 2016 Apr;66:17-22. PMID: [26995231](#)  
Of 94 first-episode Polish schizophrenia patients, those with a history of childhood trauma had significantly higher total number of auditory verbal hallucinations (AVH), and significantly more frequently third person AVH with abusive/accusatory/persecutory voices.

Applewhite L, Arincorayan D, Adams B.  
**Exploring the Prevalence of Adverse Childhood Experiences in Soldiers Seeking Behavioral Health Care During a Combat Deployment.**  
Mil Med. 2016 Oct;181(10):1275-1280. PMID: [27753563](#)  
Of 162 soldiers who sought behavioral health support during combat deployment, 83% reported at least one ACE. Scores ranged from 0 to 9 with a mean of 3. 40% had experienced 4 or more ACEs.

## Adolescents

Dudovitz RN, McCoy K, Chung PJ.  
**At-school substance use as a marker for serious health risks.**  
Acad Pediatr. 2015 Jan-Feb;15(1):41-6. PMID: [25528124](#)  
From a large US survey of high school students, at-school use of substances was associated with increased odds of 9 serious health risks: exposure to intoxicated driving, fighting, carrying a weapon at school, substance use with intercourse, experiencing intimate partner violence, being forced to have intercourse, experiencing depression, suicidal ideation, and attempting suicide. "Students found using alcohol or marijuana at school should be immediately and carefully screened for other serious health risks that pose significant present dangers."

Wardell JD, Strang NM, Hendershot CS.  
**Negative urgency mediates the relationship between childhood maltreatment and problems with alcohol and cannabis in late adolescence.**  
Addict Behav. 2016 May;56:1-7. PMID: [26774820](#)  
"High levels of impulsivity and difficulties with emotion regulation are often associated with childhood maltreatment". For 232 adolescents (mean age 19), the only facet of impulsivity that connected childhood maltreatment with present alcohol and cannabis use was negative urgency. Negative urgency refers to a tendency to behave rashly and lose control over behavior in response to negative emotions such as sadness, anger or fear.

Aghajani M, Veer IM, van Hoof MJ, et. al.  
**Abnormal functional architecture of amygdala-centered networks in adolescent posttraumatic stress disorder.**  
Hum Brain Mapp. 2016 Mar;37(3):1120-35. PMID: [26859310](#)  
Compared to controls, brain scans of Dutch sexually abused adolescents with PTSD showed alterations in morphology and connectivity in areas relating to fear regulation.

Holt A.  
**Adolescent-to-Parent Abuse as a Form of "Domestic Violence": A Conceptual Review.**  
Trauma Violence Abuse. 2016 Dec;17(5):490-499. PMID: [25971709](#)  
Review of adolescent-to-parent abuse, "a similar but distinct phenomenon to adult-instigated domestic violence and identifies how its departures represent particular challenges in working toward its elimination."

## Domestic Violence – Effects on Children

Vameghi R, Amir Ali Akbari S, Sajedi F, et. al.  
**Path Analysis Association between Domestic Violence, Anxiety, Depression and Perceived Stress in Mothers and Children's Development.**  
Iran J Child Neurol. 2016 Fall;10(4):36-48. PMID: [27843465](#)  
In this Iranian study of 750 mothers and their children, developmental delay was observed in 12.1% of children. Children's development was directly affected by maternal depression and perceived stress, and indirectly by domestic violence.

## Domestic Violence – Physical Health

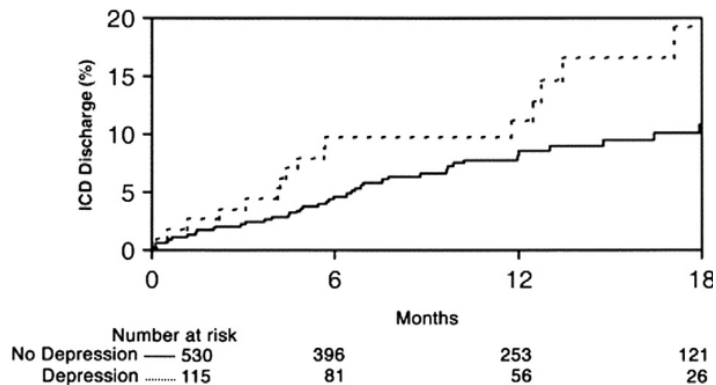
Armstrong M Jr, Strack GB.  
**Recognition and Documentation of Strangulation Crimes: A Review.**  
JAMA Otolaryngol Head Neck Surg. 2016 Sep 1;142(9):891-7. PMID: [27308820](#)  
Review article on the physical consequences of strangulation, including acute and chronic patterns of injury, methods of evaluation, and possible life-threatening complications.

Radhakrishnan R, Garakani A, Gross LS, et. al.  
**Neuropsychiatric aspects of concussion.**  
 Lancet Psychiatry. 2016 Dec;3(12):1166-1175. PMID:  
[27889010](#)

“Concussion is frequently undiagnosed as a cause of psychiatric morbidity... literature focuses on traumatic brain injury and assumes that concussion is merely a mild form of traumatic brain injury, which has resulted in a lack of understanding about what concussion is, and how to diagnose, monitor, and treat its varied neuropsychiatric symptoms...Clearly differentiating concussion from traumatic brain injury is essential to achieve reliable and clinically relevant outcomes.”

Lampert R.  
**Behavioral influences on cardiac arrhythmias.**  
 Trends Cardiovasc Med. 2016 Jan;26(1):68-77. PMID:  
[25983071](#)

Acute stress can trigger irregular heartbeats, and chronic stress increases vulnerability to irregular heartbeats. In addition, depression, anger and anxiety all have negative effects on cardiac function. [Graph shows time to first “shock” of an implanted heart defibrillator (ICD) after placement – depressed patients were more likely to need this, and need this sooner.]



## Domestic Violence – Mental Health

Gobin RL, Green KE, Iverson KM.  
**Alcohol Misuse Among Female Veterans: Exploring Associations With Interpersonal Violence and Mental Health.**  
 Subst Use Misuse. 2015;50(14):1765-77. PMID: [26642782](#)  
 For 369 female Veterans, both interpersonal violence and mental health symptoms were significant factors in alcohol use disorders.

## Elder/Dependent Adult Abuse

Rosen T, Lachs MS, Teresi J, et. al.  
**Staff-reported strategies for prevention and management of resident-to-resident elder mistreatment in long-term care facilities.**

J Elder Abuse Negl. 2016;28(1):1-13. PMID: [25894206](#)  
 From interviews with 282 certified nursing assistants in five urban nursing homes, during the previous 2 weeks 34.7% reported episodes of resident-to-resident elder mistreatment, involving 10.8% of residents. 22 different responses were described, the most common being physically intervening/separating residents, talking calmly to settle residents down, no intervention, and verbally intervening. Much less common were notifying a nurse or documenting the behavior.

Aronowitz T.  
**Sexual Health, Risk and Prevention.**  
 Interdiscip Top Gerontol Geriatr. 2017;42:134-143. PMID:  
[27875829](#)

“This chapter focuses on sexual health of older adults living with HIV infection and special concerns regarding the older adult population’s sexual health risk and suggested clinical interventions.”

Bureau of Justice Statistics  
**Crime Against Persons with Disabilities** Nov 2016  
<https://www.bjs.gov/index.cfm?ty=pbdetail&iid=5844>  
 One page summary -  
[https://ovc.ncjrs.gov/ncvrw2016/content/section-6/PDF/2016NCVRW\\_6\\_PersonsWithDisabilities-508.pdf](https://ovc.ncjrs.gov/ncvrw2016/content/section-6/PDF/2016NCVRW_6_PersonsWithDisabilities-508.pdf)

## Sexual Assault

TeBockhorst SF, O'Halloran MS, Nyline BN.  
**Tonic immobility among survivors of sexual assault.**  
 Psychol Trauma. 2015 Mar;7(2):171-8. PMID: [25793694](#)  
 Thorough discussion and review of fundamentals of, and interviews with, 7 women who survived a sexual assault accompanied by tonic immobility (TI). Detailed narratives showed consistency in perceptions and physical behaviors, including inability to move or vocalize. TI is associated with increased risk of depression, anxiety, PTSD, dissociation and poorer response to PTSD medication.

Carper TL, Mills MA, Steenkamp MM, et. al.  
**Early PTSD symptom sub-clusters predicting chronic posttraumatic stress following sexual assault.**  
Psychol Trauma. 2015 Sep;7(5):442-7. PMID: [26121173](#)  
Of 120 sexually assaulted women, those who initially experienced increased symptoms of re-experiencing and emotional numbing were much more likely to have PTSD symptoms at month 4; initial avoidance and hypervigilance symptoms did not have this effect.

Thomas L, Scott Tilley D, Esquibel K.  
**Sexual assault: where are mid-life women in the research?**  
Perspect Psychiatr Care. 2015 Apr;51(2):86-97. PMID: [24628447](#)

“This paper...describing the increased number of single women in the population, defining terms associated with sexual assault, examining rape myths, characteristics of the victim, describing the relationship of victim to assailant, extent of victimization experienced by women, common physical injuries, age-related physiological changes, psychological considerations, and post-traumatic stress disorder specific to mid-life women.”

Afari N, Pittman J, Floto E, et. al.  
**Differential impact of combat on postdeployment symptoms in female and male veterans of Iraq and Afghanistan.**  
Mil Med. 2015 Mar;180(3):296-303. PMID: [25735020](#)  
“Although male veterans (n = 458) experienced significantly higher rates of combat than female veterans (n = 96), both experienced similar levels of post-deployment post-traumatic stress disorder and depression symptoms as well self-reported aggressive behavior...Female veterans had higher rates of military sexual trauma.”

Mehling LM, Johansen SS, Wang X, et. al.  
**Drug facilitated sexual assault with lethal outcome: GHB intoxication in a six-year-old girl.**  
Forensic Sci Int. 2016 Feb;259:e25-31. PMID: [26774600](#)  
Case report of death in a sexually assaulted six-year-old girl due to high levels of the date-rapist drug GHB.

## Human Trafficking

Honor G.  
**Domestic minor sex trafficking: what the PNP needs to know.**  
J Pediatr Health Care. 2015 Jan-Feb;29(1):88-94. PMID: [25497135](#)  
Review of topic for pediatric nurse practitioners.

Nuzzolese E.  
**Human trafficking: Role of oral health care providers.**  
J Forensic Odontostomatol. 2014 Nov 30;32 Suppl 1:1-8. PMID: [25557409](#)  
Dental professionals can identify the dental/oral problems and poor nutrition of trafficked persons, provide forensic services, and contribute to trafficked persons' identification, assistance and protection.

## Cultural Issues

Finno-Velasquez M, Cardoso JB, Dettlaff AJ, Hurlburt MS.  
**Effects of Parent Immigration Status on Mental Health Service Use Among Latino Children Referred to Child Welfare.** Psychiatr Serv. 2016 Feb;67(2):192-8. PMID: [26467910](#)  
Of 390 Latino children who remained in the home after a maltreatment investigation, the odds of children receiving mental health services were significantly lower for children whose parents were undocumented compared with children whose parents were US citizens.

## Police and Court Systems

End Violence International (DOJ grant)  
**Understanding the Neurobiology of Trauma and Implications for Interviewing Victims**, Nov 2016  
<https://www.evawintl.org/Library/DocumentLibrary/Handler.ashx?id=842>

Simmons CA, Howell KH, Duke MR, Beck JG.  
**Enhancing the Impact of Family Justice Centers via Motivational Interviewing: An Integrated Review.**  
Trauma Violence Abuse. 2016 Dec;17(5):532-541. PMID: [25966969](#)  
Article discusses the importance of engaging IPV survivors involved in the Family Justice Center model “who have ambivalent feelings about whether to accept help, leave the abusive relationship, and/or participate in criminal justice processes” via motivational interviewing.

Bachmair JK, et al.  
**Asylum at Last?: Matter of A-R-C-G-'S Impact on Domestic Violence Victims Seeking Asylum.**  
Cornell Law Rev. 2016;101(4):1053-86. PMID: [27824437](#)  
Cornell Law Review article on a recent ruling that partially recognized domestic violence in another country as a justification for asylum in the US.

## Providers

Baumrucker SJ, Schmidt LS, Stolick M, et. al.

### **The allegedly abusive surrogate.**

Am J Hosp Palliat Care. 2015 Feb;32(1):112-6. PMID: [24097837](#)

The wife is in a coma, her sisters are at the bedside, and the husband is on the way. The sisters state there is a restraining order against the abusive husband but are too afraid of him to produce it. Interesting perspectives on what to do in this situation from SW, ethics, legal, chaplain, nurse, doctor – emphasizing the importance of DV survivors naming a legal healthcare surrogate.

Bianchi AL, Cesario SK, McFarlane J.

### **Interrupting Intimate Partner Violence During Pregnancy With an Effective Screening and Assessment Program.**

J Obstet Gynecol Neonatal Nurs. 2016 Jul-Aug;45(4):579-91. PMID: [27234157](#)

Thorough review of IPV during pregnancy and mechanisms for prenatal assessment and support.

Leeners B, Görres G, Block E, Hengartner MP.

### **Birth experiences in adult women with a history of childhood sexual abuse.**

J Psychosom Res. 2016 Apr;83:27-32. PMID: [27020073](#)

Compared to a control group, a group of women with a history of childhood sexual abuse were more likely to find childbirth highly frightening (24.7% vs. 5.3%), and a negative experience (40.7% vs. 19.6%). 41% experienced intrusive memories, and 58% dissociation. Positive modifying variables included birth preparation classes, presence of a trusted person, participation in medical decision-making, and pain relief.

Barnes MC, Gunnell D, Davies R, et. al.

### **Understanding vulnerability to self-harm in times of economic hardship and austerity: a qualitative study.**

BMJ Open. 2016 Feb 17;6(2):e010131. PMID: [26888729](#)

For 19 British adults who were hospitalized with a suicide attempt and specifically cited economic reasons, economic hardship may have actually only been a 'final straw' in the context of co-existing or prior damaging life-experiences.

Deblinger E, Pollio E, Dorsey S.

### **Applying Trauma-Focused Cognitive-Behavioral Therapy in Group Format.**

Child Maltreat. 2016 Feb;21(1):59-73. PMID: [26701151](#)

Instruction and examples for providing a group format to trauma-focused cognitive-behavioral

therapy for children. Also see

<https://tfcbt.musc.edu/>.

Schulman EA, Franchek-Roa K.

### **Screening Patients with Headaches for Abuse.**

Continuum (Minneapolis, Minn). 2015 Aug;21(4 Headache):1150-6. PMID: [26252598](#)

“Nearly 6 in 10 patients with migraine have experienced childhood maltreatment. Asking about childhood or ongoing abuse is essential in developing optimal treatment plans.” Authors describe use of an ACE questionnaire by neurologists.

Lee T, Fouras G, Brown R; American Academy of Child and Adolescent Psychiatry Committee on Quality Issues.

### **Practice parameter for the assessment and management of youth involved with the child welfare system.**

J Am Acad Child Adolesc Psychiatry. 2015 Jun;54(6):502-17. PMID: [26004666](#)

“This Practice Parameter presents principles for the mental health assessment and management of youth involved with the child welfare system. Important definitions, background, history, epidemiology, mental health care use, and functional outcomes are described.”

## Prevention

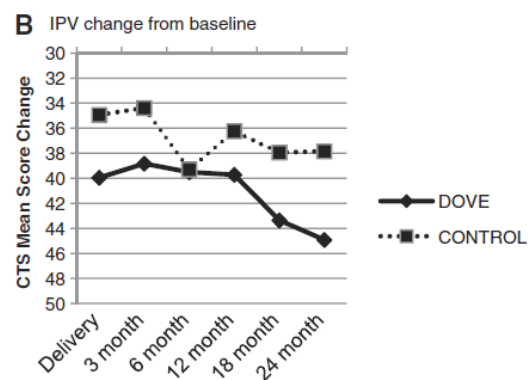
Sharps PW, Bullock LF, Campbell JC, et. al.

### **Domestic Violence Enhanced Perinatal Home Visits: The DOVE Randomized Clinical Trial.**

J Womens Health (Larchmont). 2016 Nov;25(11):1129-1138.

PMID: [27206047](#)

Controlling for maternal age and depression, an intervention for English-speaking low income pregnant women experiencing IPV that was incorporated into existing perinatal home visiting programs led to a reduction in IPV even 24 months later. The intervention consisted of a structured abuse assessment and six home visitor-delivered empowerment sessions (3 before/3 after delivery).





Bonomi AE, Nichols EM, Carotta CL, Kiuchi Y, Perry S.  
**Young Women's Perceptions of the Relationship in Fifty Shades of Grey.**  
 J Womens Health (Larchmt). 2016 Feb;25(2):139-48. PMID: [26569388](#)

“Our findings point to the value of using popular culture, including the Fifty Shades narrative, to actively engage young women in productive conversation about characteristics of relationship health and un-health.”

## Researchers

Wherry JN, Huffhines LP, Walisky DN.  
**A Short Form of the Trauma Symptom Checklist for Children.**  
 Child Maltreat. 2016 Feb;21(1):37-46. PMID: [26655211](#)  
 Creation of a validated short form of the Trauma Symptom Checklist for Children, from 54 items down to 29.

## Other of Interest

Whiting K, Liu LY, Koyutürk M, Karakurt G.  
**Network map of adverse health effects among victims of intimate partner violence.**  
 Pac Symp Biocomput. 2016;22:324-335. PMID: [27896986](#)  
 Using data mining from national aggregated de-identified electronic health records, comparing charts of women identified as experiencing domestic abuse vs. those without, 2874 terms which were used significantly more frequently in DA charts were developed into a map with 28 categories. The size and darkness of the circles shows higher frequency of use, and the thickness of lines shows a stronger relationship – that both terms were found together. Charts of patients not self-identified, or providers declining to notate DA would not be included. Mental health was surprisingly small, but authors account for this as being due to lack of connectivity to other words.

