

ABUSE RESEARCH

For archive and to sign up for distribution list:

<http://abuseresearch.info/>

Questions: Harise Stein, MD harise@stanford.edu

Child Abuse

Bick J, Nelson CA.

Early Adverse Experiences and the Developing Brain.

Neuropsychopharmacology. 2016 Jan;41(1):177-96. PMID: [26334107](#)

Review of the neurodevelopmental consequences of childhood maltreatment and deprivation.

Drury SS, Sánchez MM, Gonzalez A.

When mothering goes awry: Challenges and opportunities for utilizing evidence across rodent, nonhuman primate and human studies to better define the biological consequences of negative early caregiving.

Horm Behav. 2016 Jan;77:182-92. PMID: [26506032](#)

"Across mammalian species, mothers shape socio-emotional development and serve as essential external regulators of infant physiology, brain development, behavior patterns, and emotional regulation. Caregiving quality, consistency and predictability shape the infant's underlying neurobiological processes...the negative long-term consequences [of abuse and neglect] are translatable across species."

Doughty K, Rood C, Patel A, Thackeray JD, Brink FW.

Neurological Manifestations of Medical Child Abuse.

Pediatr Neurol. 2016 Jan;54:22-8. PMID: [26608710](#)

Various neurological manifestations have been reported in cases of medical child abuse, including false reports of life-threatening events, seizures, and poisoning. "...may lead to unnecessary and potentially harmful testing or treatment...It is important for the practicing neurologist to include medical child abuse on the differential diagnosis."

Hoytema van Konijnenburg EM, Vrolijk-Bosschaart TF, et. al.

Paediatric femur fractures at the emergency department: accidental or not?

Br J Radiol. 2016;89(1061):20150822. PMID: [26642309](#)

Comparison of three cases of young children with femur fracture in a similar location and appearance, with a discussion differentiating accident vs. abuse.

Leeper CM, Nasr I, McKenna C, Berger RP, Gaines BA.

Elevated admission international normalized ratio strongly predicts mortality in victims of abusive head trauma.

J Trauma Acute Care Surg. 2016 May;80(5):711-6. PMID: [27100929](#)

In children with abusive head trauma, an admission INR (a measure of blood coagulation) of 1.3 or greater strongly predicted death. Authors suggest that these children have early aggressive interventions and monitoring.

Münzer A, Fegert JM, Ganser HG, Loos S, Witt A, Goldbeck L.
Please Tell! Barriers to Disclosing Sexual Victimization and Subsequent Social Support Perceived by Children and Adolescents.

J Interpers Violence. 2016 Jan;31(2):355-77. PMID: [25381281](#)

Of 42 German sexually abused children aged 6-17 years, average delay in disclosure of abuse was 17 months. The most frequent reasons to withhold information were feelings of shame and threats by the perpetrator.

Sumner SA, Marcelin LH, Cela T, et. al.

Sentinel events predicting later unwanted sex among girls: A national survey in Haiti, 2012.

Child Abuse Negl. 2015 Dec;50:49-55. PMID: [26297488](#)

From a national survey of Haitian children, 1457 females reported sexual violence. Of these, 40.4% reported a sentinel event (such as unwanted touching) with a mean lag time to first unwanted completed sex of 2.3 years. Only 54.6% of those experiencing a sentinel event told someone.

Dias MS, Boehmer S, Johnston-Walsh L, Levi BH.

Defining 'reasonable medical certainty' in court: What does it mean to medical experts in child abuse cases?

Child Abuse Negl. 2015 Dec;50:218-27. PMID: [26589362](#)

Authors survey child abuse pediatricians, forensic pathologists, pediatric neurosurgeons and pediatric ophthalmologists regarding their understanding of "reasonable medical certainty", and suggest how to more accurately and transparently define this term in regard to child abuse.

Adult Manifestations of Child Abuse

Kennedy CC, Zubair A, Clark MM, Jowsey-Gregoire S.

Childhood Abuse Is Associated With Worse Survival Following Lung Transplantation.

Prog Transplant. 2016 Jun;26(2):178-82. PMID: [27207407](#)

In this small study of Mayo Clinic lung transplant patients followed over 10 years, and with no between-group differences in gender, smoking, alcohol, social support, depression, anxiety, and level of distress, those with a history of childhood physical or sexual abuse, compared to no abuse, had significantly shorter survival times.

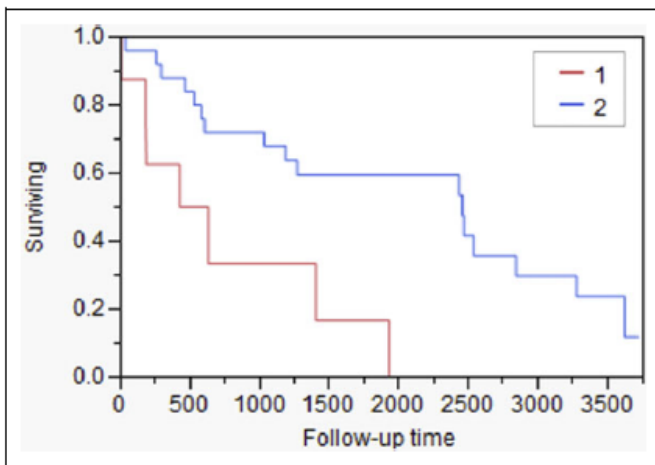


Figure 1. Kaplan-Meier curve showing the survival of lung transplant patients with a history of abuse in red as group 1 (n = 8) compared to those without a history of abuse in blue as group 2 (n = 28). Survival is significantly lower for patients with a history of abuse, $P = .0029$.

Tyrka AR, Parade SH, Price LH, et. al.

Alterations of Mitochondrial DNA Copy Number and Telomere Length With Early Adversity and Psychopathology.

Biol Psychiatry. 2016 Jan 15;79(2):78-86. PMID: [25749099](#)

For 290 adult men and women, childhood adversity and lifetime psychological disorders were each associated with shortened telomere length and alterations in mitochondrial biogenesis (both measures of premature cellular aging).

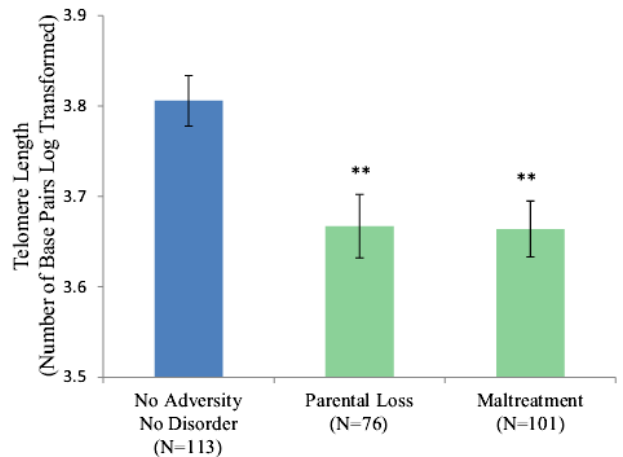


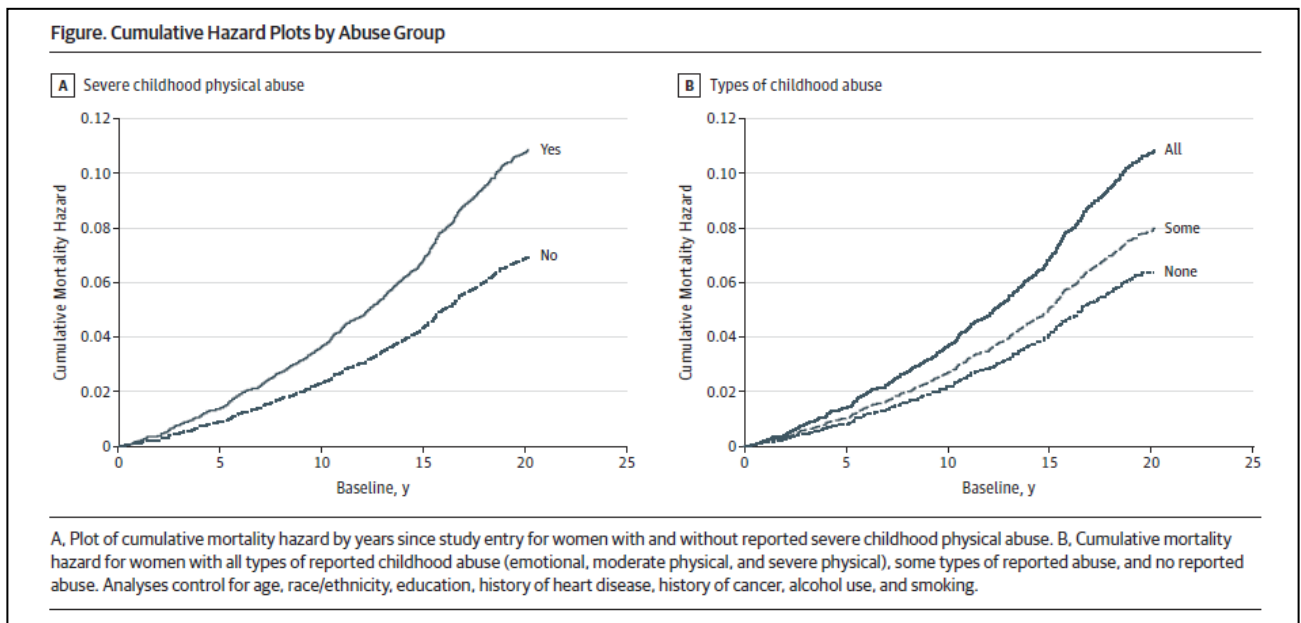
Figure 6. Telomere length by adversity type. $**p < .01$ indicates comparison with the no adversity/no disorder group.

Chen E, Turiano NA, Mroczek DK, Miller GE.

Association of Reports of Childhood Abuse and All-Cause Mortality Rates in Women.

JAMA Psychiatry. 2016 Sep 1;73(9):920-7. PMID: [27540997](#)

From a national mid-life health study, after controlling for multiple variables, for women, but not for men, childhood abuse (including emotional abuse alone) was associated with higher mortality.



Opel N, Zwanzger P, Redlich R, et. al.

Differing brain structural correlates of familial and environmental risk for major depressive disorder revealed by a combined VBM/pattern recognition approach.

Psychol Med. 2016 Jan;46(2):277-90. PMID: [26355299](#)

Different patterns of brain changes as markers of vulnerability to depression were seen in those with a family history of depression vs. those with a history of childhood maltreatment.

Perroud N, Zewdie S, Stenz L, et. al.

Methylation of serotonin receptor 3A in ADHD, borderline personality, and bipolar disorders: link with severity of the disorders and childhood maltreatment.

Depress Anxiety. 2016 Jan;33(1):45-55. PMID: [26350166](#)

Of 346 Swiss bipolar, borderline personality, or ADHD patients, "Childhood maltreatment was associated with higher severity of the disease (higher number of mood episodes, history of suicide attempts, hospitalization, and younger age at onset) across disorders and within each individual disorder." Methylation of a serotonin receptor [DNA change to a part of the stress hormone system] seemed to be an underlying mechanism.

Werner KB, McCutcheon VV, Challa M, et. al.

The association between childhood maltreatment, psychopathology, and adult sexual victimization in men and women: results from three independent samples.

Psychol Med. 2016 Feb;46(3):563-73. PMID: [26688007](#)

From a national Australian study, and adjusting for substance dependence and psychopathology, childhood sexual abuse was strongly associated with adult sexual re-victimization, with higher odds observed in men.

Duncan AE, Auslander WF, Bucholz KK, et. al.

Relationship between abuse and neglect in childhood and diabetes in adulthood: differential effects by sex, national longitudinal study of adolescent health.

Prev Chronic Dis. 2015 May 7;12:E70. PMID: [25950577](#)

From 14,493 initial adolescent participants in a national ongoing study, at age 24-34 years and irrespective of body mass index, for men only, three or more lifetime incidents of sexual abuse were associated with a 3.66 times increased risk of diabetes.

Caslini M, Bartoli F, Crocamo C, et. al.

Disentangling the Association Between Child Abuse and Eating Disorders: A Systematic Review and Meta-Analysis.

Psychosom Med. 2016 Jan;78(1):79-90. PMID: [26461853](#)

In a research review, childhood abuse was associated with bulimia and binge eating disorder, but mixed results for anorexia.

Nagl M, Steinig J, Klinitzke G, Stepan H, Kersting A.

Childhood maltreatment and pre-pregnancy obesity: a comparison of obese, overweight, and normal weight pregnant women.

Arch Womens Ment Health. 2016 Apr;19(2):355-65. PMID: [26386682](#)

From a German study of 326 pregnant women, after adjusting for age, education, income, marital status, and the number of previous children, pre-pregnancy overweight and obesity were strongly associated with severe childhood physical abuse (6.31- 8.33 times increased odds), and severe childhood physical neglect (4.25 times increased odds).

Adolescents

Doherty TS, Forster A, Roth TL.

Global and gene-specific DNA methylation alterations in the adolescent amygdala and hippocampus in an animal model of caregiver maltreatment.

Behav Brain Res. 2016 Feb 1;298(Pt A):55-61. PMID: [26027495](#)

In response to maltreatment, adolescent rats showed changes in the DNA (via methylation) of certain brain areas relating to emotion and memory, but in different areas for males and females. This could have relevance to adolescent mental health and behavior.

Voerman JS, Vogel I, de Waart F, et. al.

Bullying, abuse and family conflict as risk factors for chronic pain among Dutch adolescents.

Eur J Pain. 2015 Nov;19(10):1544-51. PMID: [25752511](#)

From a survey of 15,220 Dutch adolescents in grades 7 and 8, 9.2% reported chronic pain (especially headaches). Risk factors associated with chronic pain included bullying, sexual abuse and family conflict.

Cederbaum JA, Putnam-Hornstein E, Sullivan K, et. al.

STD and Abortion Prevalence in Adolescent Mothers With Histories of Childhood Protection Involvement.

Perspect Sex Reprod Health. 2015 Dec;47(4):187-93. PMID: [26148780](#)

Combining multiple California databases, at the time they gave birth, 1% of adolescents had a documented sexually transmitted disease, and 5% reported a previous abortion, both of which were significantly more likely in adolescents involved with CPS.

Carlson M, Oshri A, Kwon J.

Child maltreatment and risk behaviors: The roles of callous/unemotional traits and conscientiousness.

Child Abuse Negl. 2015 Dec;50:234-43. PMID: [26233813](#)

“Callous/unemotional traits are important factors in the underlying mechanism between child maltreatment and risk behaviors among young adults, and conscientiousness serves as a protective factor against violence.”

Domestic Violence – Effects on Children

Sjørubø MF, Lukasse M, Brantsæter AL, Grimstad H.

Past and recent abuse is associated with early cessation of breast feeding: results from a large prospective cohort in Norway.

BMJ Open. 2015 Dec 18;5(12):e009240. PMID: [26685028](#)

Of 53,934 Norwegian mothers, childhood abuse and adult domestic abuse (including emotional abuse alone), were strongly associated with early cessation of breast feeding.

Hardesty JL, Crossman KA, Khaw L, Raffaelli M.

Marital violence and coparenting quality after separation.

J Fam Psychol. 2016 Apr;30(3):320-30. PMID: [26866837](#)

154 divorcing mothers were assessed and classified into three groups: no violence, situational couple violence, and coercive controlling violence (CCV). Co-parenting quality was lowest in the CCV group, involving more hostility at separation, and post-separation harassment and fear.

Domestic Violence – Physical Health

McGrane Minton HA, Mittal M, Elder H, Carey MP.

Relationship Factors and Condom Use Among Women with a History of Intimate Partner Violence.

AIDS Behav. 2016 Jan;20(1):225-34. PMID: [26354519](#)

From a survey of 133 urban, low-income women, fear of abuse and partner dependence were both associated with decreased condom use (and increased risk of HIV exposure).

St Ivany A, Schminkey D.

Intimate Partner Violence and Traumatic Brain Injury: State of the Science and Next Steps.

Fam Community Health. 2016 Apr-Jun;39(2):129-37. PMID: [26882416](#)

Review of IPV-caused traumatic brain injury in women, with health outcomes.

Mcquown C, Frey J, Steer S, et. al.

Prevalence of strangulation in survivors of sexual assault and domestic violence.

Am J Emerg Med. 2016 Jul;34(7):1281-5. PMID: [27162112](#)

In a review of 1542 DV and/or rape encounters in a forensic nurse examiner program, the prevalence of strangulation was 38% with DV and 12% with sexual assault cases.

Sexual Assault

Deitz MF, Williams SL, Rife SC, Cantrell P.

Examining cultural, social, and self-related aspects of stigma in relation to sexual assault and trauma symptoms.

Violence Against Women. 2015 May;21(5):598-615. PMID: [25732041](#)

In this online study of 233 female undergrads, self-stigma after sexual assault, but not cultural or social stigma, was associated with severity of trauma symptoms.

de Heer B.

A Snapshot of Serial Rape: An Investigation of Criminal Sophistication and Use of Force on Victim Injury and Severity of the Assault.

J Interpers Violence. 2016 Feb;31(4):598-619. PMID: [25466982](#)

In a nation-wide sample of serial rape cases collected by the FBI (108 rapists, 543 victims), results indicated that “serial rapists typically used a limited amount of force against the victim and displayed a high degree of criminal sophistication. In addition, the more criminally sophisticated the perpetrator was, the more sexual acts he performed on his victim.”

Hagan KS, Reidy L.

Detection of synthetic cathinones in victims of sexual assault.

Forensic Sci Int. 2015 Dec;257:71-5. PMID: [26301833](#)

Authors describe newly-found compounds in urine samples from victims of sexual assault assessed at U of Miami Toxicology Lab, as a new wave of designer drugs has been reported in drug-facilitated sexual assault.

Lippy C, DeGue S.

Exploring Alcohol Policy Approaches to Prevent Sexual Violence Perpetration.

Trauma Violence Abuse. 2016 Jan;17(1):26-42. PMID: [25403447](#)

“Policies affecting alcohol pricing, sale time, outlet density, drinking environment, marketing, and college environment are reviewed to identify existing evidence of impact on rates of sexual violence or related outcomes, including risk factors and related health behaviors.”

Barth SK, Kimerling RE, Pavao J, et. al.

Military Sexual Trauma Among Recent Veterans: Correlates of Sexual Assault and Sexual Harassment.

Am J Prev Med. 2016 Jan;50(1):77-86. PMID: [26232906](#)
From a large national health study of recent US veterans, (34% response rate), 41% of women and 4% of men reported experiencing military sexual trauma.

Johnson NL, Robinett S, Smith LM, Cardin S.

Establishing a new military sexual trauma treatment program: Issues and recommendations for design and implementation.

Psychol Serv. 2015 Nov;12(4):435-42. PMID: [26524286](#)
Description of the process of developing a comprehensive military sexual trauma treatment program, using best practices.

O'Brien C, Keith J, Shoemaker L.

Don't tell: Military culture and male rape.

Psychol Serv. 2015 Nov;12(4):357-65. PMID: [26524277](#)
“...male rape myths and related beliefs that arise from cultural norms and are further amplified and modified by military culture impact male military sexual trauma survivors and delay or obstruct their recovery.”

[Anonymous]

Being My Own Virgil: My Journey Through Inferno From Military Sexual Trauma.

Psychol Serv. 2015 Nov;12(4):339-43. PMID: [26524274](#)
First person narrative of military sexual trauma and subsequent investigation and its consequences.

Human Trafficking

President's Interagency Task Force

Progress in Combating Trafficking in Persons: The U.S. Government's Response to Modern Slavery, 2016

<http://www.state.gov/documents/organization/263740.pdf>

Child Trends (non-profit)

Moving Beyond Trauma: Child Migrants and Refugees in the United States Sept 2016

<http://www.childtrends.org/?publications=moving-beyond-trauma-child-migrants-and-refugees-in-the-united-states-executive-summary>

Ijadi-Maghsoodi R, Cook M, Barnert ES, Gaboian S, Bath E.

Understanding and Responding to the Needs of Commercially Sexually Exploited Youth: Recommendations for the Mental Health Provider.

Child Adolesc Psychiatr Clin N Am. 2016 Jan;25(1):107-22. PMID: [26593123](#)

For mental health providers, “a review of risk factors for commercial sexual exploitation of children and the role of the clinician in identification, assessment, and treatment”, including definition and relevant legislation.

White SL, Hirth R, Mahillo B, et. al.

The global diffusion of organ transplantation: trends, drivers and policy implications.

Bull World Health Organ. 2014 Nov 1;92(11):826-35. PMID: [25378744](#)

The Global Observatory on Donation and Transplantation from the WHO has monitored global transplantation activities since 2007. “Governments can support the ethical development of organ donation and transplantation programmes. Specifically, they can ensure that appropriate legislation, regulation and oversight are in place, and monitor donation and transplantation activities, practices and outcomes.”

Elder/Dependent Adult Abuse

Knight BG, Kim S, Rastegar S, Jones S, Jump V, Wong S.

Influences on the perception of elder financial abuse among older adults in Southern California.

Int Psychogeriatr. 2016 Jan;28(1):163-9. PMID: [25937043](#)
In scenarios posited to 488 older adults in Southern Calif., “Even though most financial abuse is perpetrated by family members, older adults are less likely to perceive a financial situation as abuse when it involves a child of the victim, thus making reporting and prevention less likely.”

Dong X.

Sociodemographic and socioeconomic characteristics of elder self-neglect in an US Chinese aging population.

Arch Gerontol Geriatr. 2016 May-Jun;64:82-9. PMID: [26952381](#)

From a survey of older Chinese adults in the Chicago area, elder self-neglect (hoarding, personal hygiene, house in need of repair, unsanitary conditions, and inadequate utility) was found in those over 80 years to a mild extent in 34.6% and to a moderate/severe extent in 15.6% of participants.

Cultural Issues

Roger KS, Brownridge DA, Ursel J.

Theorizing low levels of reporting of abuse of older immigrant women.

Violence Against Women. 2015 May;21(5):632-51. PMID: [25156395](#)

Discussion of the barriers to abuse disclosure in Canadian older immigrant women, including family and cultural context, language barriers, “naming” abuse, and age as a discriminator.

Khalifeh H, Oram S, Osborn D, Howard LM, Johnson S.

Recent physical and sexual violence against adults with severe mental illness: a systematic review and meta-analysis. Int Rev Psychiatry. 2016 Oct;28(5):433-451. PMID: [27645197](#)

In a review of research on adults with severe mental illness, prevalence of recent DV was 15-22% for women and 4-10% for men. Sexual violence rates were 6 times higher than the general population.

Weiss BJ, Garvert DW, Cloitre M.

PTSD and Trauma-Related Difficulties in Sexual Minority Women: The Impact of Perceived Social Support.

J Trauma Stress. 2015 Dec;28(6):563-71. PMID: [26625354](#)

Of a sample of women seeking treatment for PTSD related to IPV, 22.9% were sexual minorities (SM). SM women had higher rates of PTSD diagnosis, and lower social support had a greater negative impact on their symptoms.

Perpetrators

Ryan EP.

Juvenile Sex Offenders.

Child Adolesc Psychiatr Clin N Am. 2016 Jan;25(1):81-97. PMID: [26593121](#)

“Public policy has tended to treat juvenile sex offenders (JSOs) as adult sex offenders in waiting, despite research that contradicts this notion.” Discussion of theories of sexual offending in youth, risk assessment and treatment.

Kim B, Benekos PJ, Merlo AV.

Sex Offender Recidivism Revisited: Review of Recent Meta-analyses on the Effects of Sex Offender Treatment.

Trauma Violence Abuse. 2016 Jan;17(1):105-17. PMID: [25575803](#)

Review of more recent studies, suggesting that sex offender treatments can be considered “proven” or at least “promising”, while age of participant and type of intervention may influence success of treatment.

Police and Court Systems

National Center on Domestic Violence, Trauma & Mental Health

The Mental Health Factor in Domestic Violence Custody Cases: Results from the Brief Survey of Lawyers who Represent DV Survivors 2016

http://www.nationalcenterdvtraumamh.org/wpcontent/uploads/2016/09/NCDVTMH_SurveyofLawyers_September2016.pdf

Krause-Parello CA, Gulick EE.

Forensic Interviews for Child Sexual Abuse Allegations: An Investigation into the Effects of Animal-Assisted Intervention on Stress Biomarkers.

J Child Sex Abus. 2015;24(8):873-86. PMID: [26701279](#)

Discussion of the benefits of the use of therapy animals during forensic interviews for child sexual abuse.

Providers

National Center on Domestic Violence, Trauma & Mental Health

Guide for Engaging & Supporting Parents Affected by Domestic Violence: Enhancing Parenting Capacity & Strengthening Parent-Child Bonds 2015

http://www.nationalcenterdvtraumamh.org/wpcontent/uploads/2016/04/NCDVTMH_GuideEngagingSupportingParents.pdf

Forsdike-Young K, Hegarty K.

Setting up a domestic violence telephone helpline for general practitioners in Australia: What exists and what works?

Aust Fam Physician. 2016 Aug;45(8):594-9. PMID: [27610451](#)
Australian DV helplines tailored to support health professionals' complex needs on management of DV in the office.

Mouw MS, Counts J, Fordham C, et. al.

Assessing Injury and Violence Prevention in North Carolina's Local Health Departments.

N C Med J. 2016 Sep-Oct;77(5):308-13. PMID: [27621337](#)
In a survey of 91% of North Carolina local public health departments, 30% reported that no staff members were familiar with evidence-based interventions in IPV, 38% did not train staff in IPV, and 48% had no dedicated funding for IPV.

Choo EK, Tapé C, Glerum KM, et. al.

"That's Where the Arguments Come in": A Qualitative Analysis of Booster Sessions Following a Brief Intervention for Drug Use and Intimate Partner Violence in the Emergency Department.

Subst Abuse. 2016 Sep 12;10:77-87. PMID: [27660459](#)
From an analysis of "booster calls" made two weeks after an ED intervention re: drug use and IPV, women described IPV as interwoven with drug use, and identified multiple challenges to getting treatment.

White A, Danis M, Gillece J.

Abuse survivor perspectives on trauma inquiry in obstetrical practice.

Arch Womens Ment Health. 2016 Apr;19(2):423-7. PMID: [26189448](#)
In a small study of women interviewed about their perception of trauma inquiry in prenatal care, survivors stated "safe" trauma inquiry included: "(1) a clear definition of trauma, (2) clear purpose for inquiry, (3) reassurance that inquiry was routine, (4) confidentiality, and (5) mention of helpful resources other than psychiatric therapy."

Strait J, Bolman T.

Consideration of Personal Adverse Childhood Experiences during Implementation of Trauma-Informed Care Curriculum in Graduate Health Programs.

Perm J. 2016;21. PMID: [27673708](#)
<http://www.thepermanentejournal.org/files/2017/ACE.pdf>
"Students and future health care practitioners who voluntarily assess their ACE Score are significantly more likely to understand scientific and clinical findings of the ACE Study as well as trauma-informed care."

Dworkin ER, Sorell NR, Allen NE.

Individual-and Setting-Level Correlates of Secondary Traumatic Stress in Rape Crisis Center Staff.

J Interpers Violence. 2016 Feb;31(4):743-52. PMID: [25381285](#)
From surveys of 164 staff members from 40 rape crisis center, younger age and greater severity of sexual assault history were important individual factors, and lower levels of supervision/higher clients loads were important setting factors, in developing secondary traumatic stress.

Prevention

Chen M, Chan KL.

Effects of Parenting Programs on Child Maltreatment Prevention: A Meta-Analysis.

Trauma Violence Abuse. 2016 Jan;17(1):88-104. PMID: [25573846](#)
Review of the effectiveness of parenting programs on reducing child maltreatment.

Cruz TH, Hess JM, Woelk L, Bear S.

A 3-Component Approach Incorporating Focus Groups in Strategic Planning for Sexual Violence Prevention.

Fam Community Health. 2016 Apr-Jun;39(2):82-91. PMID: [26882411](#)
A state-wide strategic plan to prevent sexual violence included an advisory group, subject matter experts, and focus groups from geographically and demographically diverse communities.

Prosman GJ, Lo Fo Wong SH, Römkens R, Lagro-Janssen AL.
'I am stronger, I'm no longer afraid...', an evaluation of a home-visiting mentor mother support programme for abused women in primary care.

Scand J Caring Sci. 2014 Dec;28(4):724-31. PMID: [24251372](#)
From a mother-mentor Dutch home visiting program "Abused women emphasized that nonjudgmental listening, equivalence, involvement and bonding are important factors for successful support. Mentor mothers described that empathy, availability, persistence and advocacy fitted the needs of women best to empower them and help them to cope with their violent situation at home. A safe place to meet each other was also an important factor."

Van Horn J, Eisenberg M, Nicholls CM, et. al.

Stop It Now! A Pilot Study Into the Limits and Benefits of a Free Helpline Preventing Child Sexual Abuse.

J Child Sex Abus. 2015;24(8):853-72. PMID: [26701278](#)

Report of British and Dutch helplines providing “information, advice, and guidance to anyone concerned about child sexual abuse. It targets people who have sexually abused children or who are worried that they might do so.” Users were able to modify their own or others’ actions.

Kahn JR, Collinge W, Soltysik R.

Post-9/11 Veterans and Their Partners Improve Mental Health Outcomes with a Self-directed Mobile and Web-based Wellness Training Program.

J Med Internet Res. 2016 Sep 27;18(9):e255. PMID: [27678169](#)

Both veterans and their significant partners were able to learn and make sustained use of a range of wellness practices taught as a home-based self-directed intervention. Leveraging the partner relationship may enhance sustained use of the program. “Significant improvements were seen at 8 and 16 weeks in measures of posttraumatic stress disorder, depression, sleep quality, perceived stress, resilience, self-compassion, and pain.”

Researchers

Dettlaff AJ, Christopher Graham J, Holzman J, et. al.

Development of an instrument to understand the child protective services decision-making process, with a focus on placement decisions.

Child Abuse Negl. 2015 Nov;49:24-34. PMID: [25913382](#)

“This paper presents the results of a study to develop an instrument to explore, at the caseworker level, the context of the removal decision, with the objective of understanding the influence of the individual and organizational factors on this decision.”

Yoon SA, Weierich MR.

Salivary biomarkers of neural hypervigilance in trauma-exposed women.

Psychoneuroendocrinology. 2016 Jan;63:17-25. PMID: [26398002](#)

20 women (mean age 23.6 years) with a history of trauma exposure and who were given a trauma reminder in a research setting showed elevation of salivary alpha amylase, but not cortisol. SAA might be a more reliable biomarker of trauma-related reactivity.

Other of Interest

Bhate-Deosthali P, Lingam L.

Gendered pattern of burn injuries in India: a neglected health issue.

Reprod Health Matters. 2016 May;24(47):96-103. PMID: [27578343](#)

In India annually 91,000 women die of burn injuries, more than that for maternal mortality. Burn deaths are characterized as accident, suicide and homicide, but there is a “failure of the health system of recognize underlying violence.”

Grech V.

Gendercide and femineglect.

Early Hum Dev. 2015 Dec;91(12):851-4. PMID: [26542255](#)

Review of worldwide gendercide (the selective abortion of female fetuses based solely on gender), and femineglect (the deliberate neglect of females with regard to food, health, education, etc.), along with “potentially catastrophic demographic consequences”.

Scott AJ, Rajakaruna N, Sheridan L, Gavin J.

International Perceptions of Relational Stalking: The Influence of Prior Relationship, Perpetrator Sex, Target Sex, and Participant Sex.

J Interpers Violence. 2015 Nov;30(18):3308-23. PMID: [25392387](#)

In various proposed stalking scenarios to 1200 community participants from US, Australia and UK, participants were more likely to erroneously attribute more danger to a situation if the stalker was a stranger rather than a prior partner.

MacGregor JC, Wathen CN, MacQuarrie BJ.

Domestic Violence in the Canadian Workplace: Are Coworkers Aware?

Saf Health Work. 2016 Sep;7(3):244-50. PMID: [27630795](#)

In a pan-Canadian sample of 8,429 men and women, 40% (more so for DV victims) felt that they recognized a DV victim and/or perpetrator in the workplace. 49.5% thought the situation had affected the DV victim’s ability to work, and 37.9% the perpetrator’s ability to work.