

ABUSE RESEARCH

For archive and to sign up for distribution list:

<http://abuseresearch.info/>

Questions: Harise Stein, MD harise@stanford.edu

Child Abuse

Kavanaugh BC, Dupont-Frechette JA, Jerskey BA, Holler KA.

Neurocognitive deficits in children and adolescents following maltreatment: Neurodevelopmental consequences and neuropsychological implications of traumatic stress.

Appl Neuropsychol Child. 2017 Jan-Mar;6(1):64-78. PMID: [27050166](#)

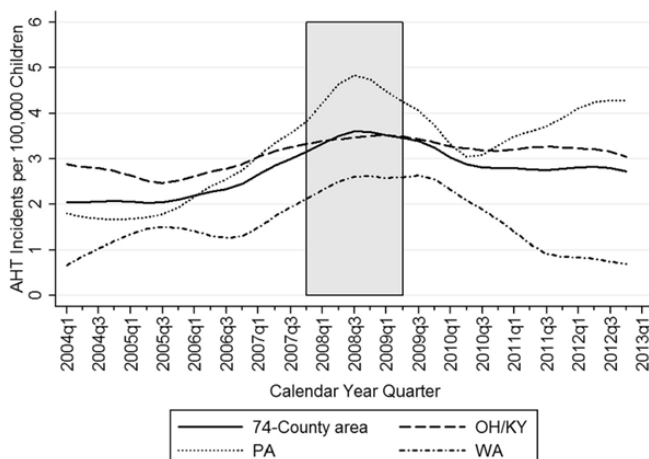
Comprehensive review of the “intellectual, language, visual-spatial, memory, motor, and/or attention/executive functions in children and adolescents following an experience of childhood abuse and/or neglect...specific factors such as abuse/neglect duration, severity, type, and timing during development...are of greater importance than just the presence of abuse/neglect.”

Wood JN, French B, Fromkin J, et. al.

Association of Pediatric Abusive Head Trauma Rates With Macroeconomic Indicators.

Acad Pediatr. 2016 Apr;16(3):224-32. PMID: [26183000](#)

Childhood abusive head trauma was associated with the recession period (2007-2009) but not with employment, mortgage delinquency or foreclosure rates. [Quarterly abusive head trauma rates for children <5 years; recession grey shaded area.]



Boop S, Axente M, Weatherford B, Klimo P Jr.

Abusive head trauma: an epidemiological and cost analysis.

J Neurosurg Pediatr. 2016 Nov;18(5):542-549. PMID:

[27402215](#)

In a review of abusive head trauma in children at one institution over a 6 year period, seasonal peaks showed in January and October, median cost was almost \$28,000, but in those who required surgical intervention costs were up to 10 times more than non-surgical cases.

Hassan M, Gary FA, Hotz R, Killion C, Vicken T.

Young Victims Telling their Stories of Sexual Abuse in the Emergency Department.

Issues Ment Health Nurs. 2015;36(12):944-52. PMID:

[26735502](#)

From a review of emergency department records, sexually abused children describe “(1) Abuse Circumstances, which included the child’s level of awareness of child sexual abuse, predisposing factors, and the perpetrator’s preparation (physical, behavioral, and verbal tactics), and (2) Physical/Psychological Suffering associated with disclosure. These have important implications for all service and health care providers.”

Ross AH, Juarez CA.

Skeletal and radiological manifestations of child abuse: Implications for study in past populations.

Clin Anat. 2016 Oct;29(7):844-53. PMID: [26710097](#)

Skeletal and radiological manifestations of child physical abuse and fatal neglect are discussed from an historical and bioarchaeological context.

Adult Manifestations of Child Abuse

Holman DM, Ports KA, Buchanan ND, et. al.

The Association Between Adverse Childhood Experiences and Risk of Cancer in Adulthood: A Systematic Review of the Literature.

Pediatrics. 2016 Nov;138 (Suppl 1):S81-S91. PMID: [27940981](#)

Review of research concludes that “childhood adversity in various forms may increase a person’s cancer risk.”

Montalvo-Liendo N, Fredland N, McFarlane J, et. al.
The Intersection of Partner Violence and Adverse Childhood Experiences: Implications for Research and Clinical Practice.
Issues Ment Health Nurs. 2015;36(12):989-1006. PMID: [26735506](#)

“Evidence strongly suggests that women reporting Adverse Childhood Experiences, especially child sexual and physical abuse, are associated with a higher risk of intimate partner violence, poor mental health, lower self-esteem, and a higher probability of chronic conditions, such as cancer.”

Mutlu H, Bilgiç V, Erten S, Aras Ş, Tayfur M.
Evaluation of the Relationship between Childhood Traumas and Adulthood Obesity Development.
Ecol Food Nutr. 2016 Jul-Aug;55(4):390-401. PMID: [27399037](#)

68% of 157 obese Turkish adults, compared to 38.8% of a non-obese control group, reported childhood traumatic experiences.

Adolescents

National Sexual Violence Resource Center, 2017
Key Findings: Sexual Identity, Sex of Sexual Contacts, and Health-Related Behaviors in Students Grades 9-12 – United States and Selected Sites 2015
http://www.nsvrc.org/sites/default/files/key-findings_sexual-identity-sex-of-sexual-contacts-and-health-related-behaviors-among-students-in-grades-9-12.pdf

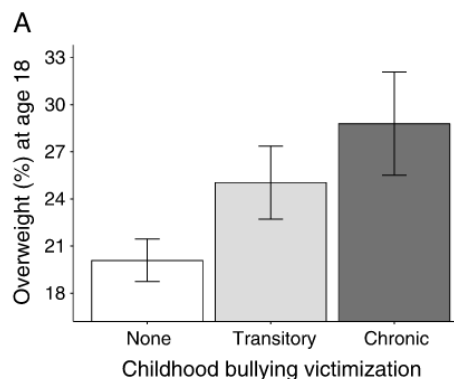
Klabunde M, Weems CF, Raman M, Carrion VG.
The moderating effects of sex on insula subdivision structure in youth with posttraumatic stress symptoms.
Depress Anxiety. 2017 Jan;34(1):51-58. PMID: [27862643](#)

Brain scans of 59 adolescents showed not only differences in certain brain areas between those with and without PTSD, but males and females with PTSD were also very different from each other, leading to a possible etiology for distinct gender-based clinical manifestations.

Driesmans K, Vandenbosch L, Eggermont S.
Playing a Videogame with a Sexualized Female Character Increases Adolescents' Rape Myth Acceptance and Tolerance Toward Sexual Harassment.
Games Health J. 2015 Apr;4(2):91-4. PMID: [26181802](#)
From a game play study of 57 secondary school pupils, [for both boys and girls](#), “Findings suggest that game-playing with a sexualized woman may increase adolescents' acceptance of rape myths and tolerance for sexual harassment.”

Baldwin JR, Arseneault L, Odgers C, et. al.
Childhood Bullying Victimization and Overweight in Young Adulthood: A Cohort Study.
Psychosom Med. 2016 Nov/Dec;78(9):1094-1103. PMID: [27814340](#)

Of 2232 children followed over time, bullied children were more likely to be overweight than non-bullied children at age 18 in a dose-response fashion, and independent of co-occurring maltreatment, socioeconomic status, food insecurity, mental health, pubertal development, and genetics. Overweight was not present at the time of bullying.



Domestic Violence – Effects on Children

Owen DJ, Wood L, Tomenson B, Creed F, Neilson JP.
Social stress predicts preterm birth in twin pregnancies.
J Psychosom Obstet Gynaecol. 2017 Mar;38(1):63-72. PMID: [27728996](#)

Of 115 twin pregnancies, 57.1% of women delivering prematurely vs. 19.2% giving birth at term had experienced a severe life event and/or marked social difficulty in the preceding year. After controlling for age, anxiety and depression, the most important factors predicting preterm birth were a severe life event (odds ratio 15.6) and a marked difficulty in a close relationship (OR 17.8).

Symes L, McFarlane J, Fredland N, Maddoux J, Zhou W.
Parenting in the Wake of Abuse: Exploring the Mediating Role of PTSD Symptoms on the Relationship Between Parenting and Child Functioning.
Arch Psychiatr Nurs. 2016 Feb;30(1):90-5. PMID: [26804508](#)
Mothers reporting IPV and PTSD symptoms showed inconsistent discipline and poor child supervision, resulting in child behavior problems.

Pernebo K, Almqvist K.

Young Children Exposed to Intimate Partner Violence Describe their Abused Parent: A Qualitative Study.

J Fam Violence. 2017;32(2):169-178. PMID: [28163366](#)

From interviews with 17 children aged 4 – 12 years who had witnessed IPV, children described their abused parent coherently, or in a vague/disorganized way, or in an avoidant way with the parent as a trauma trigger.

Voith LA, Topitzes J, Reynolds AJ.

Violent Victimization Among Disadvantaged Young Adults Exposed to Early Family Conflict and Abuse: A 24-Year Prospective Study of the Victimization Cycle Across Gender.

Violence Vict. 2016;31(4):767-85. PMID: [27301843](#)

For 1539 low-income, ethnic/racial minority children followed over time, “girls exposed to frequent family conflict are at an increased risk for revictimization in adulthood.”

Domestic Violence – Mental Health

Weiss M, Benavides MO, Fitelson E, Monk C.

The Domestic Violence Initiative: A Private-Public Partnership Providing Psychiatric Care in a Nontraditional Setting.

Psychiatr Serv. 2017 Feb 1;68(2):212. PMID: [28142394](#)

Description of a partnership between an academic psychiatry department and a local Family Justice Center to offer free psychological care to survivors of IPV. This overcame “barriers to accessing care, such as geographic distance, lack of language fluency, lack of insurance, undocumented status, stigma, and mental health providers’ lack of training regarding IPV.” Of the patients seen, 44% had PTSD, 46% major depression, and 31% anxiety disorder. 40% reported a prior suicide attempt, only 1/3 of whom had ever received mental health care.

Domestic Violence – Physical Health

Tawakol A, Ishai A, Takx RA, et. al.

Relation between resting amygdalar activity and cardiovascular events: a longitudinal and cohort study.

Lancet. 2017 Feb 25;389(10071):834-845. PMID: [28088338](#)

The amygdala is a brain structure involved in emotional memory processing, and is very affected by stressors. Childhood maltreatment and also PTSD are conditions that may lead to increased sensitivity of the amygdala to fear- or anger-related threats. This study at Mass General following 293 patients over several years found that increased amygdala activation was an independent risk factor for heart disease by signaling the bone marrow to put out inflammatory cells, which lead to blood vessel inflammation and then cardiovascular events (heart attack, stroke, etc.)

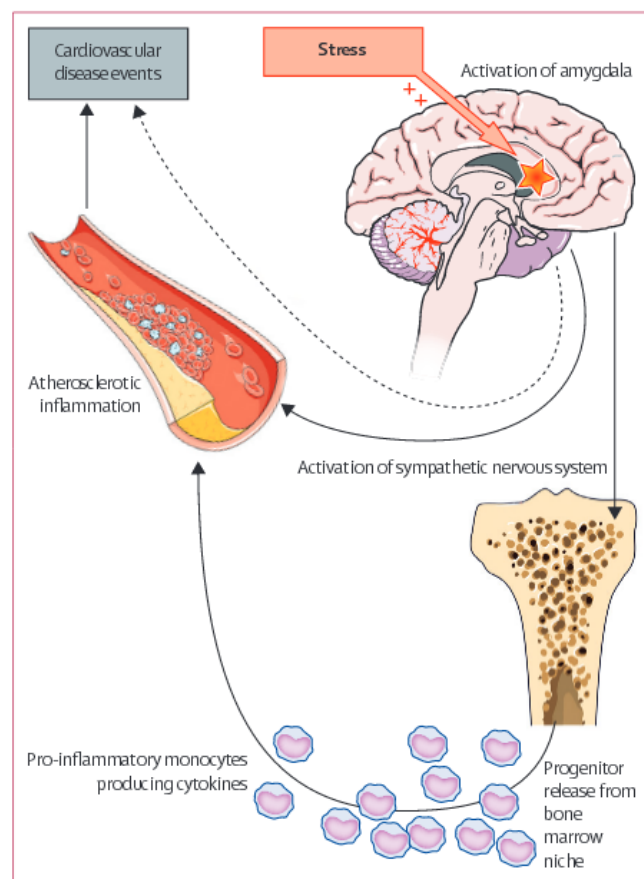


Figure 6: A model of stress leading to atherosclerotic inflammation

Data suggest that at least two biologically significant pathways link amygdalar activity to cardiovascular disease events in human beings. One of these pathways is sympathetic. The other, which is the object of this study, includes activation of the bone marrow (and release of inflammatory cells), which in turn lead to atherosclerotic inflammation and its atherothrombotic manifestations.

Elder/Dependent Adult Abuse

Krnjacki L, Emerson E, Llewellyn G, Kavanagh AM.
Prevalence and risk of violence against people with and without disabilities: findings from an Australian population-based study.

Aust N Z J Public Health. 2016 Feb;40(1):16-21. PMID: [26714039](#)

From a large national Australian study, "People with disabilities were significantly more likely to experience all types of violence, both in the past 12 months and since the age of 15. Women with disabilities were more likely to experience sexual and partner violence and men were more likely to experience physical violence."

Safe Lives and Age UK

Safe Later Lives: Older People and Domestic Abuse

Oct 2016

<http://safelives.org.uk/node/985>

Roberto KA.

The complexities of elder abuse.

Am Psychol. 2016 May-Jun;71(4):302-11. PMID: [27159437](#)

Review of elder abuse definitions, risk factors, perpetrators, outcomes, detection and intervention with potential role and contribution of psychologists.

Johnson YO.

Elder Self-Neglect: Education is Needed.

Home Healthc Now. 2015 Sep;33(8):421-4. PMID: [26323005](#)

"Self-neglect is characterized by poor hygiene, unsanitary living conditions, and inattention to basic and healthcare needs...This article provides information on what is known about the scope and prevalence of self-neglect", with implications for home care clinicians."

Wong NZ, Rosen T, Sanchez AM, et. al.

Imaging Findings in Elder Abuse: A Role for Radiologists in Detection.

Can Assoc Radiol J. 2017 Feb;68(1):16-20. PMID: [27745989](#)

Suspicious radiological findings for elder abuse are similar to suspicious findings in child abuse, "including high-energy fractures that are inconsistent with reported mechanisms and the coexistence of acute and chronic injuries." Authors advocate for increased awareness of elder abuse.

Rosen T, Bloemen EM, Harpe J, et. al.

Radiologists' Training, Experience, and Attitudes About Elder Abuse Detection.

AJR Am J Roentgenol. 2016 Dec;207(6):1210-1214. PMID: [27732066](#)

From 19 interviews with diagnostic radiologists at large urban academic medical centers, only 2 reported any formal or informal training in elder abuse detection, all believed they had missed cases of elder abuse, even experienced radiologists reported never having received a request from a referring physician to assess for this, and all reported a desire for additional training.

Mosqueda L, Wigglesworth A, Moore AA, et. al.

Variability in Findings From Adult Protective Services Investigations of Elder Abuse in California.

J Evid Inf Soc Work. 2016;13(1):34-44. PMID: [26061345](#)

From a review of APS data, telephone interviews and site visits encompassing 58 California counties, "Large variability was found from county to county in the proportions of cases found to be conclusive, inconclusive, and unfounded...significant differences in how individual APS workers interpret definitions of different types of case outcomes, varying skill and experience of the APS workers, individual and county agency factors, and other reasons that influence variability in case findings. Widespread inconsistencies in the outcomes of elder abuse investigations raise issues to be addressed on multiple levels."

Lichtenberg PA.

Financial exploitation, financial capacity, and Alzheimer's disease.

Am Psychol. 2016 May-Jun;71(4):312-20. PMID: [27159438](#)

"This article will examine the intersection of financial exploitation and decision-making capacity and introduce a new conceptual model and new tools for both the investigation and prevention of financial exploitation."

Cooper B, Crockett C.

Gender-based violence and HIV across the life course: adopting a sexual rights framework to include older women.

Reprod Health Matters. 2015 Nov;23(46):56-61. PMID: [26718997](#)

"Health providers seldom ask older women about their sexual activity and relationships, a neglect that leads to older women being excluded from necessary HIV testing and care as well as support services for abuse...worrying given the rise in new HIV infections among adults age 50 and older in recent years."

Kong J, Moorman SM.

Caring for My Abuser: Childhood Maltreatment and Caregiver Depression.

Gerontologist. 2015 Aug;55(4):656-66. PMID: [24265506](#)

Among 1001 Wisconsin filial caregivers, 18.6% reported verbal, physical or sexual abuse in childhood, and 9.4% reported neglect. Those with a history of parental abuse/neglects showed significantly more frequent depressive symptoms when providing care to their abusive parent. "This vulnerable group of caregivers should be recognized in the development and implementation of support services for family caregivers."

Sexual Assault

Baker MR, Frazier PA, Greer C, et. al.

Sexual victimization history predicts academic performance in college women.

J Couns Psychol. 2016 Nov;63(6):685-692. PMID: [26914061](#)

A history of sexual violence "was as strongly related to final-term GPA as were conscientiousness, HSR [high school rank], and ACT scores." In addition, sexual violence was a stronger predictor of leaving school than traditional predictors of academic performance

Groff Stephens S, Wilke DJ.

Sexual violence, weight perception, and eating disorder indicators in college females.

J Am Coll Health. 2016;64(1):38-47. PMID: [26502797](#)

In a study of college women at one institution over 10 years, sexual violence was the strongest predictor of purging behavior (induced vomiting or laxative use).

Larsen ML, Hilden M, Skovlund CW, Lidgaard Ø.

Somatic health of 2500 women examined at a sexual assault center over 10 years.

Acta Obstet Gynecol Scand. 2016 Aug;95(8):872-8. PMID: [27143091](#)

For 2501 Danish women seen for sexual assault and whose medical records were analyzed for 5 years both before and after the assault, after assault they were significantly more likely to experience laparoscopic surgery and cervical cancer.

Sahni V, Scott AN, Beliveau M, et. al.

Public health surveillance response following the southern Alberta floods, 2013.

Can J Public Health. 2016 Aug 15;107(2):e142-8. PMID: [27526210](#)

Following a Canadian flood that affected 100,000 in 2013, increased public health surveillance for the following six weeks showed a 3.18 times increase in sexual assaults presenting to emergency departments.

Sexual Assault – Conflict

Ba I, Bhopal RS.

Physical, mental and social consequences in civilians who have experienced war-related sexual violence: a systematic review (1981-2014).

Public Health. 2017 Jan;142:121-135. PMID: [27622295](#)

Review of consequences of sexual assault in conflict areas, including gang rape, rape, abduction, ensuing pregnancy, traumatic genital injuries, rectal and vaginal fistulae, sexual dysfunction, sexually transmitted diseases, PTSD, anxiety, depression, rejection by family and/or community, and spousal abandonment.

Vijayakumar L.

Suicide Among Refugees--A Mockery of Humanity.

Crisis. 2016;37(1):1-4. PMID: [27033678](#)

The refugee experience "It is sometimes referred to as a grief process that comprises seven losses: family and friends, language, culture, homeland, status, contact with community, and exposure to physical risk...Refugee women face many dangers while fleeing or in places of settlement including physical and sexual violence, abduction, forced prostitution, and forced sale of children. When women and girls are separated from male family members during flight or are widowed during war, they are especially susceptible to physical abuse and rape...The prevalence of suicidal behavior among refugees ranged from 3.4 to 34%."

Ali S, Kowalski S, Silva P.

Advocating for sexual rights at the UN: the unfinished business of global development.

Reprod Health Matters. 2015 Nov;23(46):31-7. PMID: [26718994](#)

"Twenty years ago, governments agreed that the right to have control over and decide freely and responsibly on all matters related to one's sexuality, free from coercion, discrimination and violence, is a fundamental human right. Since then, many aspects of sexual rights have been agreed by consensus at the global level, but the term 'sexual rights' itself continues to be removed from negotiated outcomes and left out of international agreements, often at the last stages of negotiations."

Keygnaert I, Guieu A.

What the eye does not see: a critical interpretive synthesis of European Union policies addressing sexual violence in vulnerable migrants.

Reprod Health Matters. 2015 Nov;23(46):45-55. PMID: [26718996](#)

“The current EU policy-making paradigm relegates sexual violence in vulnerable migrants as an ‘outsider’ and ‘female only’ issue while EU migration and asylum policies reinforce its invisibility.”

Human Trafficking

Hachey LM, Phillippi JC.

Identification and Management of Human Trafficking Victims in the Emergency Department.

Adv Emerg Nurs J. 2017 Jan/Mar;39(1):31-51. PMID: [28141609](#)

Assessment of trafficking indicators, collaboration with multidisciplinary service providers, and understanding the availability of federal, state, and local resources to manage the care of victims of trafficking, for advanced practice nurses.

Cultural Issues

Alhasanat D, Fry-McComish J.

Postpartum Depression Among Immigrant and Arabic Women: Literature Review.

J Immigr Minor Health. 2015 Dec;17(6):1882-94. PMID: [25644538](#)

Arab women experienced post-partum depression (PPD) in their home countries 10-37%, and as immigrants in industrialized countries (11-60%). IPV was a significant risk factor for PPD for both groups, but immigrant women also faced immigration stress, lack of access to health care services and lack of social support.

Murphy J, Samples J, Morales M, Shadbeh N.

"They Talk Like That, But We Keep Working": Sexual Harassment and Sexual Assault Experiences Among Mexican Indigenous Farmworker Women in Oregon.

J Immigr Minor Health. 2015 Dec;17(6):1834-9. PMID: [24514945](#)

Focus group discussion of “direct and indirect effects of sexual harassment and sexual assault, risk factors associated with the farmworker workplace environment, and increased vulnerability...due to low social status, poverty, cultural and linguistic issues, and isolation.”

Police and Court Systems

Ménard KS, Cox AK.

Stalking Victimization, Labeling, and Reporting: Findings From the NCVS Stalking Victimization Supplement.

Violence Against Women. 2016 May;22(6):671-91. PMID: [26472665](#)

From a national survey, “severity as measured by the presence of other crimes predicts the labeling, help seeking, and the reporting of stalking by both victims and third parties.”

Lea SJ, Callaghan L.

"It Gave Me My Life Back": An Evaluation of a Specialist Legal Domestic Abuse Service.

Violence Against Women. 2016 May;22(6):704-21. PMID: [26490507](#)

From interviews with key partners and survivors, this UK model of DV support revealed that “the holistic model of legal, practical, mental health-related, and advocacy components resulted in a range of benefits to victims and enhanced interagency partnership working.”

Providers

Reeves E.

A synthesis of the literature on trauma-informed care.

Issues Ment Health Nurs. 2015;36(9):698-709. PMID: [26440873](#)

Review of “trauma screening and patient disclosure, provider-patient relationships, minimizing distress and maximizing autonomy, multidisciplinary collaboration and referrals, and trauma-informed care in diverse settings. This synthesis also explores implications for trauma-informed care research, practice and policy.”

LoGiudice JA, Douglas S.

Incorporation of Sexual Violence in Nursing Curricula Using Trauma-Informed Care: A Case Study.

J Nurs Educ. 2016 Apr;55(4):215-9. PMID: [27023891](#)

Description of a nursing sexual violence curriculum taught from a trauma-informed care lens.

Madden K, Bhandari M.

Cochrane in CORR (®): Screening Women for Intimate Partner Violence in Healthcare Settings (Review).

Clin Orthop Relat Res. 2016 Sep;474(9):1897-903. PMID: [27385221](#)

Suggestions for orthopedic surgeons on IPV screening in the context of a Cochrane review.

Powers RA, Leili J.

"Yeah, We Serve Alcohol, but ... We Are Here to Help": A Qualitative Analysis of Bar Staff's Perceptions of Sexual Violence.

Violence Vict. 2016;31(4):692-707. PMID: [27302915](#)

Through focus group interviews, "this study explores bar staff's attitudes surrounding sexual harassment/assault, how they currently handle these situations, and their opinions regarding programs and policies that currently mandate responsibility."

Providers – Pediatrics

Escobar MA Jr, Pflugeisen BM, Duralde Y, et. al.

Development of a systematic protocol to identify victims of non-accidental trauma.

Pediatr Surg Int. 2016 Apr;32(4):377-86. PMID: [26809669](#)

Article contains both a protocol for the differentiation and diagnosis of childhood non-accidental trauma in a hospital setting, and an electronic health record example "shell" note.

Chung EK, Siegel BS, Garg A, et. al.

Screening for Social Determinants of Health Among Children and Families Living in Poverty: A Guide for Clinicians.

Curr Probl Pediatr Adolesc Health Care. 2016 May;46(5):135-53. PMID: [27101890](#)

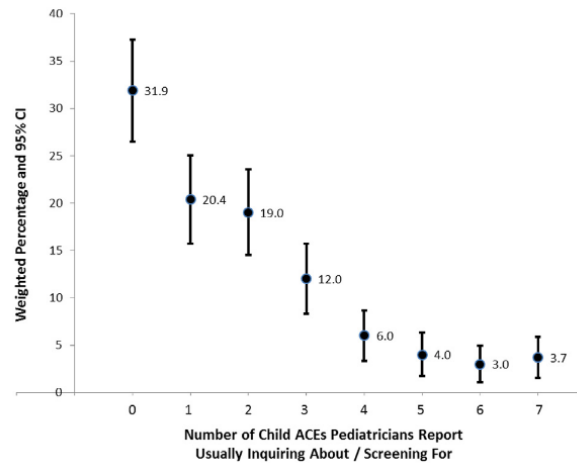
"These guidelines provide an overview of social determinants of health impacting children living in poverty and provide clinicians with practical screening tools and resources."

Kerker BD, Storfer-Isser A, Szilagyi M, et. al.

Do Pediatricians Ask About Adverse Childhood Experiences in Pediatric Primary Care?

Acad Pediatr. 2016 Mar;16(2):154-60. PMID: [26530850](#)

Using data from a 2013 national survey of 302 non-trainee general pediatricians, 32% did not usually ask about any ACEs, and less than 11% reported being somewhat or very familiar with the ACE study.



Colvin JD, Bettenhausen JL, Anderson-Carpenter KD, et. al.

Multiple Behavior Change Intervention to Improve Detection of Unmet Social Needs and Resulting Resource Referrals.

Acad Pediatr. 2016 Mar;16(2):168-74. PMID: [26183003](#)

IHELP includes asking about income, insurance, housing, hunger, education, ensuring safety (IPV only asked about if parent alone or with non-verbal child), legal status and power of attorney/guardianship. In a randomized trial of training pediatric interns on IHELP screening, 80% of charts from the intervention group showed IHELP documentation, and percentage of SW consults was nearly 3 times greater than in the non-intervention group of interns. See chart for helpful behavior change strategies for any project



Intervention Component	Behavioral Change Strategy
1. Teaching IHELP	Education/Providing Information
2. Providing IHELP cards so that memorization was not required	Reducing Barriers
3. Critique of current social history standard of care	Social normalization
4. IHELP role playing	Enhancing skills
5. Follow up meeting with interns 7–10 days after initial teaching session	Reducing Barriers (and Changing the Consequences)
6. Starting rounds with "Are there any IHELP issues?"	Social normalization
7. Attending comments of use of IHELP in two H&Ps for each intern during the 1 month rotation	Changing the Consequences

Sisk BA.

Where Were You?

Acad Pediatr. 2016 Apr;16(3):217-9. PMID: [26884097](#)

Powerful first-person narrative from a pediatric resident shadowing a CPS worker.

Baer TE, Feraco AM, Tuysuzoglu Sagalowsky S, et. al.

Pediatric Resident Burnout and Attitudes Toward Patients.

Pediatrics. 2017 Mar;139(3). pii: e20162163. PMID: [28232639](#)

Of 258 pediatric residents from 11 residency programs (53% response rate), 39% were burned out. Residents with burnout were significantly more likely to report suboptimal patient care attitudes and behaviors, including discharging patients to make the service more manageable, not fully discussing treatment options or answering questions, making treatment or medication errors, ignoring the social or personal impact of an illness, and feeling guilty about how a patient was treated.

Prevention

Murray DW, Rosanbalm K.

Promoting Self-Regulation in Adolescents and Young Adults: A Practice Brief.

OPRE Report #2015-82. Feb 2017 U.S. Department of Health and Human Services.

https://www.acf.hhs.gov/sites/default/files/opre/sr_ado_brief_revised_2_15_2017_508.pdf

“Self-regulation can be defined as the act of managing thoughts and feelings to enable goal-directed actions, including a variety of actions necessary for success in school, relationships, and the workplace.”

Trinh OT, Oh J, Choi S, To KG, Do DV.

Changes and socioeconomic factors associated with attitudes towards domestic violence among Vietnamese women aged 15-49: findings from the Multiple Indicator Cluster Surveys, 2006-2011.

Glob Health Action. 2016 Jan;9(1):29577. PMID: [28157049](#)

The prevalence of acceptance of domestic violence among surveyed Vietnamese women declined between 2006 and 2011 (65.1% to 36.1%). Key factors in acceptance were younger age and low educational attainment. “The Vietnamese government’s commitment to the Millennium Development Goals may have positively contributed to lowering the acceptance of DV” by improving educational opportunities.

Researchers

Costa D, Barros H.

Instruments to Assess Intimate Partner Violence: A Scoping Review of the Literature.

Violence Vict. 2016;31(4):591-621. PMID: [27302566](#)

1098 studies were analyzed on IPV assessment. “The Conflict Tactics Scales (CTS) were the most frequent choice among generic instruments, whereas for clinical samples, the preferred tool was the Abuse Assessment Screen.”

Postmus JL, Plummer SB, Stylianou AM.

Measuring Economic Abuse in the Lives of Survivors: Revising the Scale of Economic Abuse.

Violence Against Women. 2016 May;22(6):692-703. PMID: [26508530](#)

Analysis of a SEA-12 (Scale of Economic Abuse) as a validated shorter version of SEA (28 item).

Other of Interest

Ghosh U, Bose S, Bramhachari R, Mandal S.

Expressing collective voices on children's health: photovoice exploration with mothers of young children from the Indian Sundarbans.

BMC Health Serv Res. 2016 Nov 15;16(Suppl 7):625. PMID: [28185586](#)

Groups of mothers in rural Indian villages received training in photo documentation, and used these photos, group meetings and interface sessions with local government and health centers to transmit concerns re: water, sanitation, malnutrition, disease, service accessibility, and social issues.

Minto K, Hornsey MJ, Gillespie N, Healy K, Jetten J.

A Social Identity Approach to Understanding Responses to Child Sexual Abuse Allegations.

PLoS One. 2016 Apr 25;11(4):e0153205. PMID: [27111546](#)

In two separate studies, Catholics were much more likely to be protective of a priest accused of child sexual abuse than non-Catholics, independent of the objective likelihood of guilt, “an effect that was particularly pronounced among strongly identified Catholics...Overall, the data show that group loyalties provide a psychological motivation to disbelieve child abuse allegations. Furthermore, the people for whom this motivation is strongest are also the people who are most likely to be responsible for receiving and investigating allegations.”