

ABUSE RESEARCH

For archive and to sign up for distribution list:

<http://abuseresearch.info/>

Questions: Harise Stein, MD harise@stanford.edu

Child Abuse

Theodorou CM, Brown EG, Jackson JE, Beres AL.

Child Abuse and the COVID-19 Pandemic.

J Surg Res. 2022 Aug;276:18-23. PMID: [35325681](#)

Of children 5 years or younger admitted to a level one pediatric trauma center during the pandemic 3/20-9/20, compared to one year prior, the rate of abuse/neglect did not statistically differ; however, during the pandemic discharge to a new caregiver was significantly lower (59.1% vs. 94.1%) as was foster care placement (22.7% vs. 50.0%). "While likely multifactorial, this data suggests that resources during COVID may have been limited and the clinical significance of this is concerning."

Cheon JE, Kim JH.

Imaging of Abusive Head Trauma: A Radiologists' Perspective.

J Korean Neurosurg Soc. 2022 May;65(3):397-407. PMID: [35483021](#)

"In this review, we discuss the biomechanics of AHT [abusive head trauma], imaging features of AHT, and other conditions that mimic AHT."

Reingold RE, O'Hara MA, Levin LE.

Skin Lesions on Sensitive Sites: Mimickers of Sexual Abuse in Children.

Pediatr Rev. 2022 Jun 1;43(6):e15-e19. PMID: [35641453](#)

Dermatologic conditions that manifest in the anogenital area in children may be difficult to distinguish from child sexual abuse, and dermatologic conditions and sexual abuse can present together and are not mutually exclusive. This paper includes a variety of pictures of dermatologic conditions as abuse mimickers. Authors recommend partnership with an interdisciplinary team, including a pediatric dermatologist and a child abuse pediatric specialist to aid in diagnosis.

Vriesman MH, Vrolijk-Bosschaart TF, Lindauer RJL, et. al.

Prevalence of suspected child abuse in children with constipation: a case-control study.

BMJ Paediatr Open. 2022 Feb;6(1):e001338. PMID: [35648803](#)

Although a possible association between child abuse and neglect and adult functional (no identifiable cause) constipation has been described, this study of 228 children seen for functional constipation in an outpatient clinic compared to matched controls did not show an association between suspected child abuse or neglect and constipation.

Schønning V, Sivertsen B, Hysing M, Dovran A, Askeland KG.

Childhood maltreatment and sleep in children and adolescents: A systematic review and meta-analysis.

Sleep Med Rev. 2022 Jun;63:101617. PMID: [35313257](#)

A thorough research review showed significant associations between exposure to childhood maltreatment and insomnia symptoms (Odds Ratio 3.91), shorter sleep duration (-12.1 min) and nightmares (OR 3.15). "Our findings highlight the importance of screening and intervening for sleep problems in children and adolescents exposed to childhood maltreatment."

Adult Manifestations of Child Abuse

Smith GC, Dolbin-MacNab M, Infurna F, et. al.

Self-reported Adverse Childhood Experiences Among Custodial Grandmothers: Frequencies, Patterns, and Correlates.

Int J Aging Hum Dev. 2022 Jun 16:914150221106096. PMID: [35711151](#)

Of 355 custodial grandmothers (CGM), only 11% reported 0 ACEs, and 52.4% reporting >4. Predominant ACEs were bullying (54.6%), verbal abuse (51.5%), physical abuse (45.4%), and living with a substance abuser (41.1%). Different ACE profiles had unique impacts on CGMs' physical and psychological well-being. "We conclude that ACEs are highly prevalent among CGMs and a serious public health concern. Future research addressing ACEs among CGMs is critical in order to support these caregivers and promote resilience in custodial grandfamilies."

McElvaney R, McDonnell Murray R, Dunne S.
Siblings' Perspectives of the Impact of Child Sexual Abuse Disclosure on Sibling and Family Relationships.

Fam Process. 2022 Jun;61(2):858-872. PMID: [34060077](#)

In this small Irish study of the adult siblings of those who had experienced childhood sexual abuse, many participants found out about the abuse more than a decade after it happened (48%), 2% found out immediately, and an additional 9% found out within weeks or months afterwards. The mean age for participants when they found out was 26. The most typical way that respondents discovered the abuse was that their sibling told them (49%), followed by being told by other family members (11%) or someone outside the family (11%). The main themes that emerged from sibling interviews included intense emotional reaction and distress; change in the sibling relationship, reflecting either an increased closeness or an increased strain; and struggling to manage family dynamics as the impact of the abuse and subsequent disclosure influenced family relationships.

McCutchen C, Hyland P, Shevlin M, Cloitre M.
The occurrence and co-occurrence of ACEs and their relationship to mental health in the United States and Ireland.

Child Abuse Negl. 2022 May 26;129:105681. PMID: [35643057](#)

Comparing data on US and Irish adults, Irish respondents had a higher rate of ACEs; were more likely to experience specific ACEs; and were more likely to meet diagnostic requirements for major depressive disorder, generalized anxiety disorder, and complex PTSD (CPTSD) than U.S. respondents. Emotional neglect was more strongly related to mental health than all other ACEs, and there was an exceptionally strong dose-response association between ACEs and CPTSD.

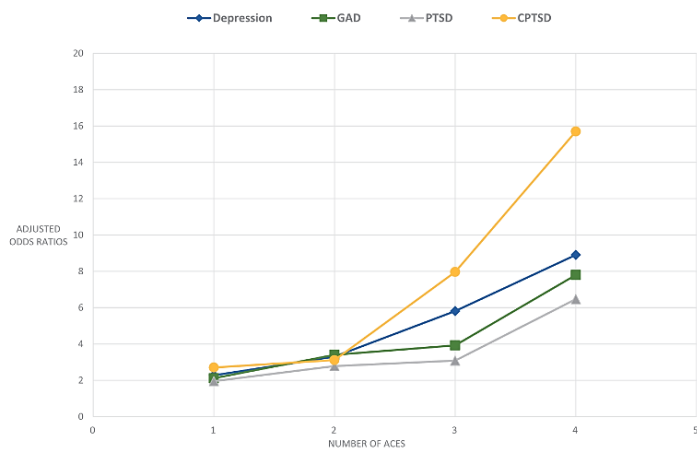


Fig. 3. Dose response associations between number of ACEs and mental health outcomes.

Fung HW, Chien WT, Ling HW, Ross CA, Lam SKK.
The mediating role of post-traumatic stress disorder symptoms in the relationship between childhood adversities and depressive symptoms in two samples.

Child Abuse Negl. 2022 Jun 14;131:105707. PMID: [35714440](#)

From two online surveys of Chinese adults, the presence of PTSD symptoms influenced whether or not childhood abuse led to adult depression. "Our findings suggest that addressing unresolved PTSD symptoms for adults with childhood adversities may help in preventing or treating depressive symptoms."

Wong RS, Tung KTS, Ho FKW, et. al.
Associations between childhood maltreatment and psychiatric disorders: analysis from electronic health records in Hong Kong.

Transl Psychiatry. 2022 Jun 6;12(1):231. PMID: [35668084](#)

From a large study of Hong Kong young adults, "Childhood maltreatment exposure was significantly associated with subsequent diagnosis of conduct disorder/ oppositional defiant disorder (adjusted hazard ratio 10.99), attention deficit hyperactivity disorder (ADHD) (7.28), and personality disorders (5.36). The risk of psychiatric disorders following childhood maltreatment did not vary by age at maltreatment exposure, and gender."

Vadukapuram R, Shah K, Ashraf S, et. al.
Adverse Childhood Experiences and Their Impact on Sleep in Adults: A Systematic Review.

J Nerv Ment Dis. 2022 Jun 1;210(6):397-410. PMID: [35640064](#)

From a research review, ACEs were associated with adult chronic short sleep duration (<6 hrs/night), as well as other poor sleep characteristics. Authors advocate for increased awareness of this factor in trauma care, and better education/training in patients for improved sleep.

Pérez-Balaguer A, Peñuelas-Calvo I, Alacreu-Crespo A, et. al.
Impulsivity as a mediator between childhood maltreatment and suicidal behavior: A systematic review and meta-analysis.

J Psychiatr Res. 2022 Jul;151:95-107. PMID: [35477079](#)

"Studies suggest that exposure to traumatic situations in childhood affects the proper neurobiological, cognitive, and affective development of individuals. This may increase impulsivity, which in turn would be related to an increased risk of suicide. The effects of childhood maltreatment and impulsivity may be both therapeutic targets of interest to reduce suicide rates."

de Heer C, Bi S, Finkenauer C, Alink L, Maes M.
The Association Between Child Maltreatment and Loneliness Across the Lifespan: A Systematic Review and Multilevel Meta-Analysis.

Child Maltreat. 2022 Jun 2;10775595221103420. PMID: [35652822](#)

From a research review, “individuals with maltreatment histories, especially those who have been emotionally abused and/or emotionally neglected, are vulnerable to experiencing loneliness across the lifespan...feelings of loneliness warrant attention in prevention and intervention programs for individuals with maltreatment histories.”

Adolescents

Chaplo S, Fishbein D.

Capitalizing on Neuroplasticity Across Development to Redirect Pathways from Juvenile Justice Involvement.

Curr Top Behav Neurosci. 2022;53:235-254. PMID: [34486099](#)

“Adolescence is an exquisitely sensitive period of development during which pathways branch toward success in school and prosocial pursuits or, conversely, toward behavior problems and involvement in high-risk activities and systems, such as juvenile justice (JJ)... evidence is summarized of how neurodevelopmental pathways may lead to JJ involvement. Because neurodevelopment is malleable...there is potential for well-targeted interventions to normalize brain and cognitive development, especially during sensitive periods of maturation.” A research agenda for these interventions is proposed.

Ragavan MI, Barral RL, Randell KA.

Addressing Adolescent Relationship Abuse in the Context of Reproductive Health Care.

Semin Reprod Med. 2022 Mar;40(1-02):146-154. PMID: [34996120](#)

“Adolescent relationship abuse (ARA) is a significant public health issue that includes physical, sexual, psychological and cyber abuse, reproductive coercion, and/or sexual exploitation within an intimate relationship in which one or both partners is a minor. ARA is associated with numerous negative outcomes that include all domains of health...This article will review the epidemiology and outcomes of ARA, followed by a discussion of means to robustly address ARA in health care settings. We recommend a strengths-based approach that promotes healthy adolescent relationships, connects adolescents experiencing ARA to harm

reduction resources, and equips adolescents to serve as a resource for their peers.”

Chiu J, Quayle E.

Understanding online grooming: An interpretative phenomenological analysis of adolescents' offline meetings with adult perpetrators.

Child Abuse Negl. 2022 Jun;128:105600. PMID: [35338948](#)

This research study of 14-21 year-old UK and EU young women “takes an in-depth look into grooming processes from the perspective of the adolescent victim and explores how the relationships progressed online-to-offline, resulting in sexual abuse. Findings suggest an insufficient knowledge of grooming and the need to more clearly define risks among adolescents. Safety guidelines should highlight the subtleties of grooming tactics and harmful behaviours that may not be readily perceived as abuse.”

Draxler JM, Ruppert TM.

Treatment Adherence in Adolescents With Histories of Adverse Childhood Experiences: A Systematic Review.

J Psychosoc Nurs Ment Health Serv. 2022 Jun;60(6):11-18. PMID: [34846229](#)

From a research review, “Treatment adherence was most often defined as some form of attendance in a treatment program. Results support a relationship between ACEs and treatment nonadherence in adolescents. ACEs related to maltreatment, particularly emotional abuse, may be more predictive of treatment nonadherence than other types of ACEs.”

Domestic Violence – Effects on Children

Greely JT, Dongarwar D, Crear L, et. al.

Violence against pregnant women and adverse maternal/fetal outcomes in the United States: racial/ethnic disparities.

Women Health. 2022 Jun 14:1-9. PMID: [35702758](#)

Data from the 2002 to 2018 National Inpatient Sample (NIS) was used to analyze pregnancy-related hospitalizations of women aged 15-49 years who experienced violence during pregnancy. When compared to those with no exposure, individuals of all ethnic groups exposed to violence had increased risk of all adverse maternal/fetal outcomes (preterm birth, intrauterine fetal demise, miscarriage, fetal growth restriction, hypertensive disorders of pregnancy, and gestational diabetes).

Renner LM, Piescher KN, Mickelson NL.

Academic Outcomes Among Children Who Experienced or Were Exposed to Physical Abuse.

J Interpers Violence. 2022 Jun 2;8862605221101185. PMID: [35653186](#)

Of 1740 Minnesota 8-10 year-olds who were either evaluated for physical abuse by CPS, or were a sibling exposed to child physical abuse, with matched controls, both CPS-involved children and their siblings showed less school attendance over the 4 years of the study than the control group. In addition, both CPS-involved children and their siblings showed declines in reading and math proficiency if they were exposed to IPV. "Siblings of maltreated children are in need of greater attention with respect to assessment and service delivery in the child protection system...they may exhibit feelings of guilt because they were not directly maltreated and/or helplessness because they could not stop the abuse, which may translate into symptoms of depression or anxiety, may lead to behavioral challenges, and possibly to the avoidance of the school environment."

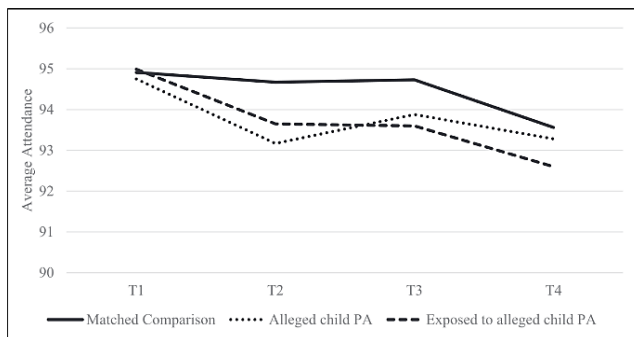


Figure 1. Average attendance over a 4-year period.

Domestic Violence – Physical Health

Anto-Ocrah M, Cafferky V, Lewis V.

Pregnancy After Concussion: A Clarion Call for Attention?

J Head Trauma Rehabil. 2022 Jul-Aug 01;37(4):E268-E279. PMID: [34570027](#)

"Emerging research shows that women who sustain a mild traumatic brain injury, also termed concussion, have a higher risk of menstrual irregularities and sexual dysfunctions." In this study of women of reproductive age seen at a level 1 trauma center and followed for 24 months, 102 with concussion and 143 with injuries to arms or legs, and excluding those using birth control, incidence of pregnancy was 76% lower for women with

concussion than those with extremity injuries. Authors note need to study the long-term reproductive effects of concussion.

Gaudette É, Seabury SA, Temkin N, et. al.

Employment and Economic Outcomes of Participants With Mild Traumatic Brain Injury in the TRACK-TBI Study.

JAMA Netw Open. 2022 Jun 1;5(6):e2219444. PMID: [35767257](#)

Of 435 previously employed study participants with mild traumatic brain injury, more than half (59%) reported not working at 2 weeks after injury; 17% reported not working at 12 months after injury. Those who were offered employer assistance in the first 3 months after injury were significantly more likely to report working at 12 months. "This study found that mild traumatic brain injury is associated with substantial employment and economic consequences for some patients . "

Margerison CE, Roberts MH, Gemmill A, Goldman-Mellor S. **Pregnancy-Associated Deaths Due to Drugs, Suicide, and Homicide in the United States, 2010-2019.**

Obstet Gynecol. 2022 Feb 1;139(2):172-180. PMID: [34991132](#)

"Of 11,782 pregnancy-associated deaths identified between 2010 and 2019...drug-related deaths, suicide, and homicide accounted for 22.2%. All three causes of death increased over the study period, with drug-related pregnancy-associated deaths increasing 190%. Pregnant and postpartum people identified as non-Hispanic American Indian or Alaska Native were at highest risk of drug-related and suicide death, and people identified as non-Hispanic Black were at highest risk of homicide. Deaths due to drug use, suicide, and homicide constitute more than one fifth of all deaths during pregnancy and the first year postpartum."

Domestic Violence – Mental Health

Romito P, Pellegrini M, Saurel-Cubizolles MJ.

Intimate Partner Violence Against Women During the COVID-19 Lockdown in Italy: A Multicenter Survey Involving Anti-Violence Centers.

Violence Against Women. 2022 Jul;28(9):2186-2203. PMID: [35481785](#)

Of 238 Italian women attending antiviolence centers June – September 2020, "IPV increased for 28% of cohabitating and decreased for 56% of non-cohabitating women."

Elder/Dependent Adult Abuse

Steinman KJ, Anetzberger GJ.

Measuring the diverse characteristics of county adult protective services programs.

J Elder Abuse Negl. 2022 Jun 22:1-21. PMID: [35733382](#)

“In 2020, a survey of Ohio's 85 county-administered APS programs described the programs in a systematic manner. This process illustrated an efficient approach to measuring organizational characteristics (e.g., whether any staff are mostly dedicated to APS), resources (e.g., access to multidisciplinary teams), and practices (e.g., how often staff create a plan to meet client goals)...Understanding the diverse characteristics of APS programs - and how to measure them - can help agencies guide quality improvement efforts and the dissemination of innovations.”

Sexual Assault

Chalmers K, Parameswaran R, Dussault N, et. al.

Impact of Sexual Assault Survivor Identity on Patient Care in the Emergency Department.

J Interpers Violence. 2022 Jun 3:8862605221104522. PMID: [35658735](#)

Advocates are volunteers or staff dispatched from rape crisis centers to support survivors during ED care. From a survey of 315 sexual assault advocates, “75% of advocates indicated that they often or always observe ED staff showing empathy to survivors. Disparities were found in provider attitudes. Over 75% of advocates observed that survivors' mental health status or substance use impacted belief from providers. Patients who were intoxicated when assaulted, had psychiatric disorders, were Black, Hispanic/LatinX, or indigenous, or were not cis-females were more likely to experience disbelief. Patients who were white and/or cis-gender females were more likely to be pressured by ED staff to complete the forensic exam and/or report to the police...Given that post-assault ED interactions are critical turning points in survivors' future medical processes, disparities in ED care may be linked to larger disparities in healing from trauma.”

Hendrikx LJ, Williamson V, Murphy D.

Adversity during military service: the impact of military sexual trauma, emotional bullying and physical assault on the mental health and well-being of women veterans.

BMJ Mil Health. 2021 Oct 25:bmjmilitary-2021-001948.

PMID: [34697241](#)

From an online survey of 750 UK female veterans, “The findings indicate a high prevalence of military adversity (22.5% sexual harassment, 5.1% sexual assault, 22.7% emotional bullying and 3.3% physical assault)...All types of adversity were significantly associated with probable post-traumatic stress disorder. Sexual harassment was additionally significantly associated with physical somatization (physical symptoms); sexual assault with alcohol difficulties; and emotional bullying with common mental health difficulties, low social support and loneliness.”

Human Trafficking

Greenbaum J, Sprang G, Recknor F, Harper NS, Titchen K.

Labor trafficking of children and youth in the United States: A scoping review.

Child Abuse Negl. 2022 Jun 21;131:105694. PMID: [35749904](#)

From a research review of US child labor trafficking, research for which authors noted was largely lacking, “Findings suggested that sex and labor trafficking may share common risk factors (e.g., prior child maltreatment and out-of-home placement) as well as within group differences (e.g., labor trafficked children had less prior child welfare involvement than those involved in sex trafficking and were more likely to be younger, male, Black or non-white, and Hispanic). Multiple physical/behavioral health symptoms were reported.”

Sanchez-Clemente N, Eisen S, Harkensee C, et. al.

Beyond arrival: safeguarding unaccompanied asylum-seeking children in the UK.

Arch Dis Child. 2022 Jun 21:archdischild-2021-323648. PMID: [35728940](#)

“In this review, we look at the reasons young people are forced to flee their countries, how they make their journey, and the risks and dangers they face along the way. We examine safety and victimisation risks faced by children and young people after arrival in the UK, which mechanisms and processes exist to safeguard these individuals, and examine the data available on outcomes of an unaccompanied asylum-seeking child.”

LGBTQ Concerns

Tran NM, Henkhaus LE, Gonzales G.

Adverse Childhood Experiences and Mental Distress Among US Adults by Sexual Orientation.

JAMA Psychiatry. 2022 Apr 1;79(4):377-379. PMID: [35195677](#)

“The sample included 61 871 adults; 6.7% identified as sexual minority individuals. Among heterosexual adults, 64% experienced 1+ ACE, and 26% 3+ ACEs. Among sexual minority adults, 83% experienced 1+ ACE, and 52% 3+ ACEs...sexual minority adults had higher odds for all 8 types of ACEs compared with heterosexual adults. Disparities by sexual minority identity were greatest for sexual abuse (adjusted odds ratio, 2.94), household mental illness (aOR, 2.43), and emotional abuse (aOR, 2.30). Sexual minority people experienced more bad mental health days per month at all levels of ACEs.”

Race/Cultural Concerns

Stern JA, Barbarin O, Cassidy J (Eds).

Attachment perspectives on race, prejudice, and anti-racism: Introduction to the Special Issue.

Attach Hum Dev. 2022 Jun;24(3):253-259. PMID: [34503390](#)

“The papers in this special issue, highlighted in the introduction, illuminate pathways of risk and resilience in Black children, adolescents, and families and point to the protective power of relationships (and the limits of such protection) for mental and physical health.”

Muscattell KA, Merritt CC, Cohen JR, Chang L, Lindquist KA.

The Stressed Brain: Neural Underpinnings of Social Stress Processing in Humans.

Curr Top Behav Neurosci. 2022;54:373-392. PMID: [34796448](#)

“We summarize research that has examined the neural underpinnings of three types of social stressors: social rejection, social evaluation, and racism-related stress. Within our discussion of each type of social stressor, we describe the methods used to induce stress, the brain regions commonly activated among studies investigating that type of stress, and recommendations for future work.”

Green KA, Wolinsky R, Parnell SJ, et. al.

Deconstructing Racism, Hierarchy, and Power in Medical Education: Guiding Principles on Curriculum Design.

Acad Med. 2022 Jun 1;97(6):804-811. PMID: [34817407](#)

From a curriculum analysis at Boston University Medical School, recommendations include (1) challenging the persistence of biological/genetic

notions of race, (2) embedding structural practices in medical education to dismantle racism in medicine, and (3) promoting institutional climate change. Initial implementation is described.

Seiler J, Hajat A, Khosropour CM, Guthrie BL, Balkus JE.

A Novel Curriculum Review Process to Initiate the Incorporation of Anti-Racist Principles.

Am J Epidemiol. 2022 Jun 11;kwac105. PMID: [35695754](#)

“In July 2020, we introduced a new tool (the ‘Course Development Plan’ [CDP]) which includes two components: (1) a guideline document that provides strategies on how to modify curriculum and classroom teaching to incorporate anti-racism and principles of equity, diversity and inclusion (EDI); and (2) a structured worksheet for instructors to share EDI and anti-racism practices they already incorporate. Worksheets for each class are submitted prior to the beginning of the quarter and are reviewed by a peer faculty member and at least one Epidemiology student; reviewers provide written feedback on the CDP worksheet. We present this Commentary about our Department's efforts, the challenges we faced, and our hopes for next steps.”

Byrd JN, Huynh KA, Aqeel Z, Chung KC.

General surgery residency and action toward surgical equity: A scoping review of program websites.

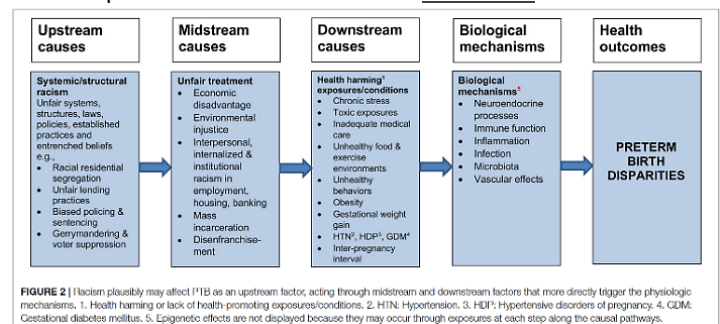
Am J Surg. 2022 Jul;224(1 Pt B):307-312. PMID: [35164956](#)

“We reviewed the websites of the 332 ACGME-accredited general surgery residency programs for mission statement, curriculum and research details in addition to diversity, equity and inclusion statements...76% of training program websites do not mention healthcare inequity. Of the programs that do, 7% describe initiatives, including an endowed lectureship in anti-racism and community engagement work.”

Braveman P, Dominguez TP, Burke W, et. al.

Explaining the Black-White Disparity in Preterm Birth: A Consensus Statement From a Multi-Disciplinary Scientific Work Group Convened by the March of Dimes.

Front. Reprod. Health 2021 3:684207. [Full article](#)



Fanta M, Ladzekpo D, Unaka N.

Racism and pediatric health outcomes.

Curr Probl Pediatr Adolesc Health Care. 2021

Oct;51(10):101087. PMID: [34711499](#)

“Racism - a system operating at the intrapersonal, interpersonal, institutional, and structural level - is a serious threat to the health and wellbeing of children and adolescents. This narrative review highlights racism as a social determinant of health, and describes how racism breeds disparate pediatric health outcomes in infant health, asthma, Type 1 diabetes, mental health, and pediatric surgical conditions.”

Okoniewski W, Sundaram M, Chaves-Gnecco D, et. al.

Culturally Sensitive Interventions in Pediatric Primary Care

Settings: A Systematic Review.

Pediatrics. 2022 Feb 1;149(2):e2021052162. PMID: [35098300](#)

From a research review, “The included articles provide preliminary evidence that culturally sensitive interventions can be feasible and effective and may help eliminate disparities for patients from communities with barriers to equitable care.” Interventions related to a wide variety of health concerns, and included multiple approaches to culturally relevant values and preferences.

Brown A, Auguste E, Omobhude F, Bakana N, Sukhera J.

Symbolic Solidarity or Virtue Signaling? A Critical Discourse

Analysis of the Public Statements Released by Academic Medical Organizations in the Wake of the Killing of George Floyd.

Acad Med. 2022 Jun 1;97(6):867-875. PMID: [35044980](#)

After the killing of George Floyd, many medical schools released public statements condemning racism and expressing solidarity with Black communities. In an analysis of 45 such statements, authors felt that many statements often reflected power differentials through formal, analytical, guarded, and distanced language; seemed to absolve organizations of structural culpability in maintaining or reinforcing racism; minimized anti-Black racism such as the absence of Black voices and perspectives in statements; and lacked self-reflection on historical and ongoing anti-Black racism in medical organizations. “While these statements are well-intentioned”, the authors underscore the need for meaningful action and not simply lip service.

Perpetrators

Mulvihill N.

Professional authority and sexual coercion: doctor abuse.

Soc Sci Med. 2022 May 30;305:115093. PMID: [35660697](#)

“This paper focuses on the lived experience of grooming and sexual violence of an adult survivor of doctor abuse...It explores how professional authority can both facilitate and conceal sexual coercion through building dependency; use of language and authorship of the official record; and by functional complicity and ‘data doubling’ within intra and inter-professional cultures [professionals protecting their own, and instead of listening to the person, rely on the ‘data double’ person supplied in the records by the perpetrator].”

Police and Court Systems

Bach MH, Ahrens C, Howard R, Dahlgren S.

Hope Shattered: An Interpretive Phenomenological Analysis of Survivors' Experiences With Untested Rape Kits.

Violence Against Women. 2022 Jun 20;10778012221083335.

PMID: [35726210](#)

“This study examined narratives of 15 survivors whose rape kits had been part of the rape kit backlog. Analysis suggested that survivors experience an extreme sense of betrayal and loss of faith in the criminal justice system when their kits are not tested. For these survivors, the rape kit was more than just evidence in a box...when the rape kit was abandoned, survivors felt like they, themselves, had been abandoned...this study highlights the importance of police transparency, diligence, and clear communication.”

Providers

Ravi A, Gorelick J, Pal H.

Identifying and Addressing Vicarious Trauma.

Am Fam Physician. 2021 May 1;103(9):570-572. PMID:

[33929175](#)

“Chronic exposure to secondhand trauma can lead to vicarious trauma, whereby an individual internalizes the emotional experiences of others as though that individual had personally experienced them. Vicarious trauma can result in a change of worldview and disturb a person’s sense of justness and safety of the world...Unaddressed vicarious trauma can compromise ability to provide care or professional services and can affect personal health and relationships.” This article reviews risk factors, symptoms, and variety of intervention tools and techniques.

Miller ML, Gerhart JI, Maffett AJ, et. al.

Experiential Avoidance and Post-traumatic Stress Symptoms Among Child Abuse Counselors and Service Workers: A Brief Report.

J Interpers Violence. 2022 Jun;37(11-12):NP10382-NP10392. PMID: [33289447](#)

In this small study of 31 child abuse counselors and service workers, 41.9% reported clinically significant PTSD symptoms. Prominently associated with higher levels of these symptoms were avoidance and emotion regulation difficulties. "Clinicians and other professionals should be attentive to the possibility that similar to the experience of the clients that they serve, inflexible and avoidant reactions to upsetting thoughts, memories, and emotions could paradoxically increase their own distress."

Renov V, Risser L, Berger R, et. al.

The impact of the COVID-19 pandemic on child protective services caseworkers and administrators.

Child Abuse Negl. 2022 Aug;130(Pt 1):105431. PMID: [34953611](#)

From interviews with 36 CPS caseworkers and administrators, "Several services were adapted to occur virtually, providing challenges and unique opportunities. Participants also described the personal barriers they faced during the pandemic, including working remotely, experiencing burnout, and challenges obtaining personal protective equipment. Finally, participants shared creative solutions they engaged in to support children and families during the COVID-19 pandemic, including expanding collaborations with other community-based organizations."

Granner JR, Seng JS.

Using Theories of Posttraumatic Stress to Inform Perinatal Care Clinician Responses to Trauma Reactions.

J Midwifery Womens Health. 2021 Sep;66(5):567-578. PMID: [34612574](#)

"Team members can implement trauma-specific programs for their clients, but ability to respond to recognition of triggered trauma reactions in the moment is a vital form of trauma-specific practice. Several theories of what causes posttraumatic stress disorder can frame these moments and inform responses: (1) action system for danger versus action system for daily life, (2) failure of fear extinction, (3) betrayal trauma and injury to the attachment system, and (4) posttraumatic dysregulation...Understanding theories of posttraumatic stress can help clinicians identify persons with PTSD and respond appropriately."

Authors review a tiered approach to patient care as well as current PTSD treatments.

Matthew A, Moffitt C, Huth-Bocks A, et. al.

Establishing Trauma-Informed Primary Care: Qualitative Guidance from Patients and Staff in an Urban Healthcare Clinic.

Children (Basel). 2022 Apr 26;9(5):616. PMID: [35626792](#)

"A successful ambulatory healthcare practice serving children and families is one that is prepared to address both medical and social needs as the two overlap considerably. Patients, including children and their caregivers, expect providers to be non-judgmental and responsive if they are going to share some of their most personal, and potentially distressing, experiences. Through training and ongoing support to providers and staff, as well as commitment to broader trauma-informed structure and processes, identification of childhood adversity and appropriate supportive interventions can occur early so that childhood development and life-long health consequences of exposure can be mitigated."

Van Leer-Greenberg BM, Hudson LC, Hoenig LJ.

Teen Dating Abuse, Rape and Violence: The Dermatologist's Role.

Clin Dermatol. 2022 May 31:S0738-081X(22)00067-0. PMID: [35654362](#)

Authors summarize detection and management of teen dating abuse, resources, and legal issues for the dermatologist, when suspicion of dating abuse arises with unexplained bruising, other skin injuries, and/or sexually transmitted infections.

Koenigs KJ, Chou JH, Cohen S, et. al.

Informed consent is poorly documented when obtaining toxicology testing at delivery in a Massachusetts cohort.

Am J Obstet Gynecol MFM. 2022 Jul;4(4):100621. PMID: [35354087](#)

"Positive toxicology testing at delivery can have enormous consequences for birthing persons and their families, including charges of child abuse or neglect and potential loss of custody for the birthing parent. Therefore state and national guidelines stipulate that clinicians must obtain consent before toxicology testing at delivery." In this study of 5 hospitals in Massachusetts 2016-2020, verbal consent for testing was documented in only 29.8% of tests performed, and was lacking across most demographic groups.

Prevention

Saeteurn ER, Wu Q, Vasiliou N, Mabingani D, Krysik J.
Peer parent programs in child welfare: A systematic review.
Child Abuse Negl. 2022 May 28;129:105682. PMID:
[35640347](#)

“Peer parent programs provide child welfare involved families a unique opportunity to connect with parents who have successfully navigated the child welfare system and who share similar lived experiences...All of the peer parent programs reviewed had a positive impact on reunification rates...Child welfare agencies should consider developing peer parent programs as they appear to be a promising intervention to support parents and increase positive child welfare outcomes.”

Su Y, Meng X, Yang G, D'Arcy C.
The relationship between childhood maltreatment and mental health problems: coping strategies and social support act as mediators.

BMC Psychiatry. 2022 May 27;22(1):359. PMID: [35619058](#)
In this national Canadian study, both external positive social support (attachment, guidance, reliable alliance, social integration, and reassurance of worth) and more importantly internal positive coping skills (self-perceived ability to handle unexpected and difficult problems as well as day-to-day demands) acted as direct and indirect buffers between childhood maltreatment and adult major depression, generalized anxiety disorder, and suicidality.

Parekh J, Kim L, Karberg E, Whitfield B, Scott ME.
Examining Partnership Approaches for Engaging Fathers to Address Domestic Violence.
Violence Against Women. 2022 Jul;28(9):2098-2121. PMID:
[34424099](#)

This study discusses findings from qualitative interviews with 27 individuals from 17 fatherhood and DV organizations across the United States, including the variety of partnership activities used to prevent and address DV, strategies for creating productive partnerships, and partnership areas that need further attention.

Hemingway A, Sullivan K.
Reducing the incidence of domestic violence: An observational study of an equine-assisted intervention.
Fam Process. 2022 Jun;61(2):549-570. PMID: [35355260](#)

“Significant reductions in domestic violence and child-in-need status were found for those families who had a member or members attend and complete the equine-assisted intervention under study...Referrals to this intervention are normally for those families for whom talk-based interventions such as parenting, or education-based interventions

are not working.” Overall research to date has found that the interaction between humans and horses may have an impact on human behavior, quality of life, and well-being via improving communication skills, calmness, responsibility, anger management, and pride.

Researchers

Fortier CB, Beck BM, Werner KB, et. al.
The Boston Assessment of Traumatic Brain Injury-Lifetime Semistructured Interview for Assessment of TBI and Subconcussive Injury Among Female Survivors of Intimate Partner Violence: Evidence of Research Utility and Validity.
J Head Trauma Rehabil. 2022 May-Jun 01;37(3):E175-E185. PMID: [34145160](#)

“The BAT-L is the first validated instrument to diagnose traumatic brain injuries (TBIs) throughout the life span for post-9/11 veterans. The BAT-L/IPV was adapted to target diagnostic issues belonging exclusively to IPV while maintaining its life span approach...The BAT-L/IPV performed well in diagnosing TBI in female IPV survivors as compared with the criterion standard...On the BAT-L/IPV, more than one-third (35.3%) of IPV survivors reported TBI secondary to an IPV-related assault, 76.5% reported IPV subconcussive head injury, 31.4% reported attempted strangulation, and 37.3% reported non-IPV TBI.”

Rothman EF, Cuevas CA, Mumford EA, Bahrami E, Taylor BG.
The Psychometric Properties of the Measure of Adolescent Relationship Harassment and Abuse (MARSHA) With a Nationally Representative Sample of U.S. Youth.
J Interpers Violence. 2022 Jun;37(11-12):NP9712-NP9737. PMID: [33399026](#)

“This article describes a new instrument that assesses adolescent dating abuse (ADA) victimization and perpetration. The Measure of Adolescent Relationship Harassment and Abuse (MARSHA) is a comprehensive instrument that includes items on physical, sexual, and psychological ADA, as well as cyber dating abuse, social control, and invasion of privacy...Results suggest that the MARSHA has good reliability and validity, and that each subscale had good internal consistency. The authors propose that the MARSHA may be a strong alternative to the CADRI or the conflict tactics scale (CTS) because it reflects contemporary forms of abuse, such as online harassment and pressure to send nude selfies, and the nonconsensual dissemination of sexually explicit images.”

Rothman EF, Campbell JK, Hoch AM, et. al.

Validity of a three-item dating abuse victimization screening tool in a 11-21 year old sample.

BMC Pediatr. 2022 Jun 10;22(1):337. PMID: [35689198](#)

This article describes a shortened 3 item version of the MARSHA – the MARSHA-C. “For youth who endorse ≥ 1 MARSHA-C items, there is a 91% probability that they have experienced DA [dating abuse] in the past year.” The predictive validity of the MARSHA-C is approximately equivalent for females and males, younger and older adolescents, and racial and sexual minorities. “The MARSHA-C can be used to detect DA among 11-21-year-old youth via online surveys for research purposes, or in clinical care settings to facilitate proactive patient counseling or parent-oriented anticipatory guidance...The 3 items are: someone had asked or pressured them for a nude or almost nude photo or video when they did not want to give one; they reported that a partner yelled, screamed, or swore at them; and they reported that a partner made them feel like they could not break up or get out of the relationship.”

Garcia-Vergara E, Almeda N, Fernández-Navarro F, et. al.

Risk Assessment Instruments for Intimate Partner Femicide: A Systematic Review.

Front Psychol. 2022 May 31;13:896901. PMID: [35712218](#)

From a research review, “the Danger Assessment, the Danger Assessment for Immigrants, the Danger Assessment for Law Enforcement, the Danger Assessment-5, the Taiwan Intimate Partner Violence Danger Assessment, the Severe Intimate Partner Risk Prediction Scale, The Lethality Screen, and the H-Scale are specific risk assessment instruments for predicting homicide and attempted homicide. There are differences in the number and content of risk assessment items, but most of them include the evidence’s critical factors associated with homicide. Validity and reliability scores vary, being consistency and accuracy medium-high for estimating homicide. Future research directions are discussed.”

Other of Interest

Ybarra ML, Mitchell KJ, Oppenheim JK.

Violent Media in Childhood and Seriously Violent Behavior in Adolescence and Young Adulthood.

J Adolesc Health. 2022 May 9:S1054-139X(22)00349-4. PMID: [35550330](#)

887 children completed a survey on “the amount of music, video games, television, websites with real people, and cartoons that depicted ‘physical

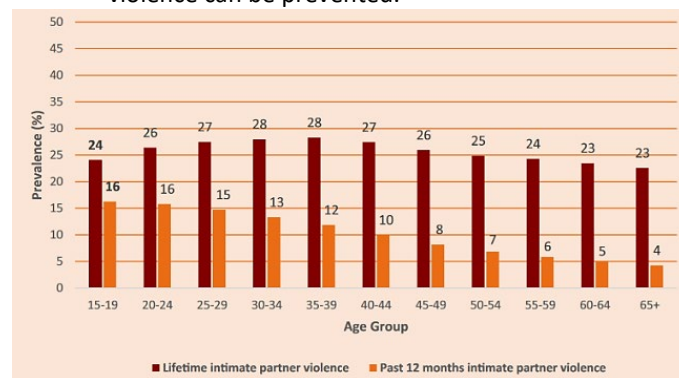
fighting, hurting, shooting, or killing’”, and then a follow-up survey 5 years later as adolescents. After adjusting for other factors, the relative odds of reporting seriously violent behavior over time were 1.70 times higher with each incremental increase in the baseline violent media consumption. “The relative odds also were elevated for those frequently exposed to violence in music (adjusted odds ratio = 3.28), television (aOR = 3.51), and video games (aOR = 3.27).” Results were similar at 10 year follow-up.

Sardinha L, Maheu-Giroux M, Stöckl H, et. al.

Global, regional, and national prevalence estimates of physical or sexual, or both, IPV against women in 2018.

Lancet. 2022 Feb 26;399(10327):803-813. PMID: [35182472](#)

“Intimate partner violence against women is a global public health problem with many short-term and long-term effects on the physical and mental health of women and their children...This study developed global, regional, and country estimates, based on data from the WHO Global Database on Prevalence of Violence Against Women... Governments are not on track to meet targets on the elimination of violence against women and girls, despite robust evidence that intimate partner violence can be prevented.”



Dyer O.

University of California to pay out nearly \$700m over gynaecologist accused of sexual abuse.

BMJ. 2022 May 26;377:o1335. PMID: [35618292](#)

This article details recent payouts of UCLA \$690 million, Ohio State \$40.9 million, Michigan State \$500 million, U of Michigan \$490 million, USC \$1.1 billion for class action lawsuits regarding sexual abuse of patients. It relates details of the charges, such as inappropriately requiring a vaginal ultrasound exam and using the ultrasound probe to simulate intercourse, and sexual touching of unconscious patients; the impact on patients; the retribution against staff who came forward with complaints; and the lack of accountability against administrators who ignored concerns.